

## Product datasheet for **TA361150**

### HGS Rabbit Polyclonal Antibody

#### Product data:

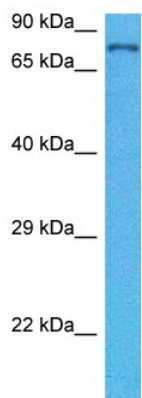
Product Type:	Primary Antibodies
Applications:	WB
Reactivity:	Human
Host:	Rabbit
Clonality:	Polyclonal
Immunogen:	The immunogen is a synthetic peptide directed towards the C terminal region of human HGS
Specificity:	<b>Expected reactivity:</b> Human
Formulation:	Liquid. Purified antibody supplied in 1x PBS buffer with 0.09% (w/v) sodium azide and 2% sucrose. <i>Note that this product is shipped as lyophilized powder to China customers.</i>
Concentration:	lot specific
Purification:	Affinity purified
Conjugation:	Unconjugated
Storage:	For short term use, store at 2-8°C up to 1 week. For long term storage, store at -20°C in small aliquots to prevent freeze-thaw cycles.
Stability:	Shelf life: one year from despatch.
Predicted Protein Size:	85 kDa
Gene Name:	hepatocyte growth factor-regulated tyrosine kinase substrate
Database Link:	<a href="#">NP_004703.1</a> <a href="#">Entrez Gene 9146 Human</a> <a href="#">O14964</a>
Background:	The protein encoded by this gene regulates endosomal sorting and plays a critical role in the recycling and degradation of membrane receptors. The encoded protein sorts monoubiquitinated membrane proteins into the multivesicular body, targeting these proteins for lysosome-dependent degradation.
Synonyms:	Hrs; Vps27; ZFYVE8
Protein Families:	Druggable Genome



[View online »](#)

Protein Pathways: Endocytosis

## Product images:



Host: Rabbit  
Target Name: HGS  
Sample Type: HCT15 Cell Lysate  
Antibody Dilution: 1.0 $\mu$ g/ml

Host: Rabbit  
Target Name: HGS  
Sample Tissue: Human HCT15 Whole Cell lysates  
Antibody Dilution: 1 $\mu$ g/ml