

Product datasheet for **TA361149**

FAM82B (RMDN1) Rabbit Polyclonal Antibody

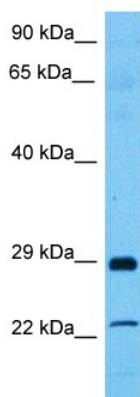
Product data:

Product Type:	Primary Antibodies
Applications:	WB
Reactivity:	Human
Host:	Rabbit
Clonality:	Polyclonal
Immunogen:	The immunogen is a synthetic peptide directed towards the C terminal region of human FAM82B
Specificity:	Expected reactivity: Human
Formulation:	Liquid. Purified antibody supplied in 1x PBS buffer with 0.09% (w/v) sodium azide and 2% sucrose.
Concentration:	lot specific
Purification:	Affinity purified
Conjugation:	Unconjugated
Storage:	For short term use, store at 2-8°C up to 1 week. For long term storage, store at -20°C in small aliquots to prevent freeze-thaw cycles.
Stability:	Shelf life: one year from despatch.
Predicted Protein Size:	29 kDa
Gene Name:	regulator of microtubule dynamics 1
Database Link:	NP_001273636.1 Entrez Gene 51115 Human Q96DB5-3
Synonyms:	CGI-90; FAM82B; RMD-1; RMD1



[View online »](#)

Product images:



Host: Rabbit
Target Name: FAM82B
Sample Type: Esophagus Tumor Lysate
Antibody Dilution: 1.0µg/ml

Host: Rabbit
Target Name: FAM82B
Sample Tissue: Human Esophagus Tumor lysates
Antibody Dilution: 1ug/ml