

Product datasheet for **TA361144**

Carboxypeptidase Z (CPZ) Rabbit Polyclonal Antibody

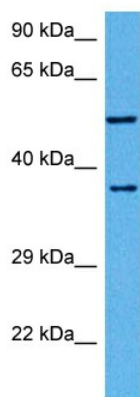
Product data:

Product Type:	Primary Antibodies
Applications:	WB
Reactivity:	Human
Host:	Rabbit
Clonality:	Polyclonal
Immunogen:	The immunogen is a synthetic peptide directed towards the middle region of human CPZ
Specificity:	Expected reactivity: Human
Formulation:	Liquid. Purified antibody supplied in 1x PBS buffer with 0.09% (w/v) sodium azide and 2% sucrose.
Concentration:	lot specific
Purification:	Affinity purified
Conjugation:	Unconjugated
Storage:	For short term use, store at 2-8°C up to 1 week. For long term storage, store at -20°C in small aliquots to prevent freeze-thaw cycles.
Stability:	Shelf life: one year from despatch.
Predicted Protein Size:	56 kDa
Gene Name:	carboxypeptidase Z
Database Link:	NP_001014447.1 Entrez Gene 8532 Human Q66K79-3
Background:	This gene encodes a member of the metallocarboxypeptidase family. This enzyme displays carboxypeptidase activity towards substrates with basic C-terminal residues. It is most active at neutral pH and is inhibited by active site-directed inhibitors of metallocarboxypeptidases. Alternative splicing in the coding region results in multiple transcript variants encoding different isoforms.
Synonyms:	MGC99682
Protein Families:	Druggable Genome, Protease, Secreted Protein



[View online »](#)

Product images:



Host: Rabbit
Target Name: CPZ
Sample Type: 786-0 Cell Lysate
Antibody Dilution: 1.0 μ g/ml

Host: Rabbit
Target Name: CPZ
Sample Tissue: Human 786-0 Whole Cell lysates
Antibody Dilution: 1 μ g/ml