

Product datasheet for **TA361135**

ZCCHC4 Rabbit Polyclonal Antibody

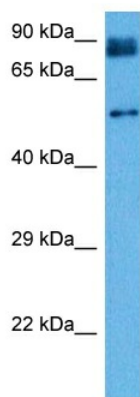
Product data:

Product Type:	Primary Antibodies
Applications:	WB
Reactivity:	Human
Host:	Rabbit
Clonality:	Polyclonal
Immunogen:	The immunogen is a synthetic peptide directed towards the middle region of human ZCCHC4
Specificity:	Expected reactivity: Human
Formulation:	Liquid. Purified antibody supplied in 1x PBS buffer with 0.09% (w/v) sodium azide and 2% sucrose.
Concentration:	lot specific
Purification:	Affinity purified
Conjugation:	Unconjugated
Storage:	For short term use, store at 2-8°C up to 1 week. For long term storage, store at -20°C in small aliquots to prevent freeze-thaw cycles.
Stability:	Shelf life: one year from despatch.
Predicted Protein Size:	56 kDa
Gene Name:	zinc finger CCHC-type containing 4
Database Link:	NP_079212.2 Entrez Gene 29063 Human Q9H5U6-3
Background:	May be a methyltransferase.
Synonyms:	FLJ23024; HSPC052; MGC21108



[View online »](#)

Product images:



Host: Rabbit
Target Name: ZCCHC4
Sample Type: Nerve Fiber Tumor Lysate
Antibody Dilution: 1.0 μ g/ml

Host: Rabbit
Target Name: ZCCHC4
Sample Tissue: Human Neurofibroma Tumor lysates
Antibody Dilution: 1 μ g/ml