

## Product datasheet for **TA361132**

### **POLD1 Rabbit Polyclonal Antibody**

#### **Product data:**

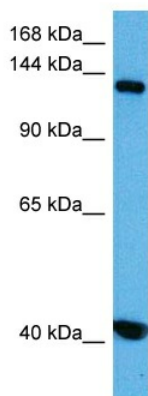
Product Type:	Primary Antibodies
Applications:	WB
Reactivity:	Human
Host:	Rabbit
Clonality:	Polyclonal
Immunogen:	The immunogen is a synthetic peptide directed towards the N terminal region of human POLD1
Specificity:	<b>Expected reactivity:</b> Human
Formulation:	Liquid. Purified antibody supplied in 1x PBS buffer with 0.09% (w/v) sodium azide and 2% sucrose. <i>Note that this product is shipped as lyophilized powder to China customers.</i>
Concentration:	lot specific
Purification:	Affinity purified
Conjugation:	Unconjugated
Storage:	For short term use, store at 2-8°C up to 1 week. For long term storage, store at -20°C in small aliquots to prevent freeze-thaw cycles.
Stability:	Shelf life: one year from despatch.
Predicted Protein Size:	121 kDa
Gene Name:	polymerase (DNA) delta 1, catalytic subunit
Database Link:	<a href="#">NP_001243778.1</a> <a href="#">Entrez Gene 5424 Human P28340</a>
Background:	This gene encodes the 125-kDa catalytic subunit of DNA polymerase delta. DNA polymerase delta possesses both polymerase and 3' to 5'; exonuclease activity and plays a critical role in DNA replication and repair. Alternatively spliced transcript variants have been observed for this gene, and a pseudogene of this gene is located on the long arm of chromosome 6.
Synonyms:	CDC2; POLD
Protein Families:	Druggable Genome, Stem cell - Pluripotency



[View online »](#)

**Protein Pathways:** Base excision repair, DNA replication, Homologous recombination, Metabolic pathways, Mismatch repair, Nucleotide excision repair, Purine metabolism, Pyrimidine metabolism

### Product images:



Host: Rabbit  
Target Name: POLD1  
Sample Type: MCF7 Cell Lysate  
Antibody Dilution: 1.0 $\mu$ g/ml

Host: Rabbit  
Target Name: POLD1  
Sample Tissue: Human MCF7 Whole Cell lysates  
Antibody Dilution: 1 $\mu$ g/ml