

Product datasheet for **TA361131**

CHRNB1 Rabbit Polyclonal Antibody

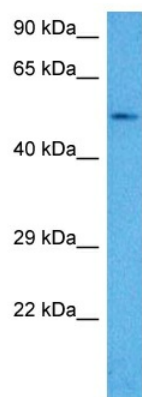
Product data:

Product Type:	Primary Antibodies
Applications:	WB
Reactivity:	Human
Host:	Rabbit
Clonality:	Polyclonal
Immunogen:	The immunogen is a synthetic peptide directed towards the middle region of human CHRNB1
Specificity:	Expected reactivity: Human
Formulation:	Liquid. Purified antibody supplied in 1x PBS buffer with 0.09% (w/v) sodium azide and 2% sucrose. <i>Note that this product is shipped as lyophilized powder to China customers.</i>
Concentration:	lot specific
Purification:	Affinity purified
Conjugation:	Unconjugated
Storage:	For short term use, store at 2-8°C up to 1 week. For long term storage, store at -20°C in small aliquots to prevent freeze-thaw cycles.
Stability:	Shelf life: one year from despatch.
Predicted Protein Size:	55 kDa
Gene Name:	cholinergic receptor nicotinic beta 1 subunit
Database Link:	NP_000738.2 Entrez Gene 1140 Human P11230
Background:	The muscle acetylcholine receptor is composed of five subunits: two alpha subunits and one beta, one gamma, and one delta subunit. This gene encodes the beta subunit of the acetylcholine receptor. The acetylcholine receptor changes conformation upon acetylcholine binding leading to the opening of an ion-conducting channel across the plasma membrane. Mutations in this gene are associated with slow-channel congenital myasthenic syndrome.
Synonyms:	AChRB; CHRNB; CMS1D; CMS2A; FLJ57107; SCCMS
Protein Families:	Druggable Genome, Ion Channels: Cys-loop Receptors, Transmembrane



[View online »](#)

Product images:



Host: Rabbit
Target Name: CHRNB1
Sample Type: Jurkat Cell Lysate
Antibody Dilution: 1.0 μ g/ml

Host: Rabbit
Target Name: CHRNB1
Sample Tissue: Human Jurkat Whole Cell lysates
Antibody Dilution: 1 μ g/ml