

Product datasheet for **TA361124**

SAP97 (DLG1) Rabbit Polyclonal Antibody

Product data:

Product Type:	Primary Antibodies
Applications:	WB
Reactivity:	Human
Host:	Rabbit
Clonality:	Polyclonal
Immunogen:	The immunogen is a synthetic peptide directed towards the middle region of human DLG1
Specificity:	Expected reactivity: Human
Formulation:	Liquid. Purified antibody supplied in 1x PBS buffer with 0.09% (w/v) sodium azide and 2% sucrose. <i>Note that this product is shipped as lyophilized powder to China customers.</i>
Concentration:	lot specific
Purification:	Affinity purified
Conjugation:	Unconjugated
Storage:	For short term use, store at 2-8°C up to 1 week. For long term storage, store at -20°C in small aliquots to prevent freeze-thaw cycles.
Stability:	Shelf life: one year from despatch.
Predicted Protein Size:	88 kDa
Gene Name:	discs large MAGUK scaffold protein 1
Database Link:	NP_001091894.1 Entrez Gene 1739 Human Q12959-9
Background:	This gene encodes a multi-domain scaffolding protein that is required for normal development. This protein may have a role in septate junction formation, signal transduction, cell proliferation, synaptogenesis and lymphocyte activation. Several alternatively spliced transcript variants encoding different isoforms have been described for this gene, but the full-length nature of some of the variants is not known.
Synonyms:	dj1061C18.1.1; DKFZp761P0818; DKFZp781B0426; DLGH1; hdlg; OTTHUMP00000165203; SAP-97; SAP97

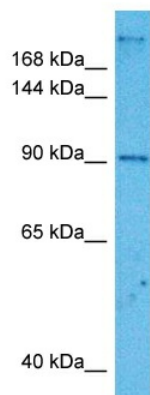


[View online »](#)

Protein Families: Druggable Genome

Protein Pathways: T cell receptor signaling pathway

Product images:



Host: Rabbit
Target Name: DLG1
Sample Type: HCT15 Cell Lysate
Antibody Dilution: 1.0 μ g/ml

Host: Rabbit
Target Name: DLG1
Sample Tissue: Human HCT15 Whole Cell lysates
Antibody Dilution: 1 μ g/ml