

## Product datasheet for **TA361123**

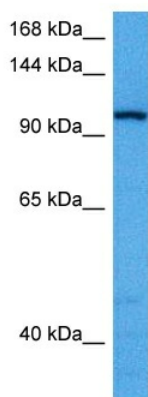
### **NAP1 (NAA25) Rabbit Polyclonal Antibody**

#### **Product data:**

Product Type:	Primary Antibodies
Applications:	WB
Reactivity:	Human
Host:	Rabbit
Clonality:	Polyclonal
Immunogen:	The immunogen is a synthetic peptide directed towards the N terminal region of human NAA25
Specificity:	<b>Expected reactivity:</b> Human
Formulation:	Liquid. Purified antibody supplied in 1x PBS buffer with 0.09% (w/v) sodium azide and 2% sucrose. <i>Note that this product is shipped as lyophilized powder to China customers.</i>
Concentration:	lot specific
Purification:	Affinity purified
Conjugation:	Unconjugated
Storage:	For short term use, store at 2-8°C up to 1 week. For long term storage, store at -20°C in small aliquots to prevent freeze-thaw cycles.
Stability:	Shelf life: one year from despatch.
Predicted Protein Size:	106 kDa
Gene Name:	N(alpha)-acetyltransferase 25, NatB auxiliary subunit
Database Link:	<a href="#">NP_079229.2</a> <a href="#">Entrez Gene 80018 Human</a> <a href="#">Q14CX7</a>
Background:	This gene encodes the auxiliary subunit of the heteromeric N-terminal acetyltransferase B complex. This complex acetylates methionine residues that are followed by acidic or asparagine residues.
Synonyms:	4833422K13Rik; A630046C11; A1450868; C330023M02Rik; LRRGT00164; Mdm20; RGD1305685



[View online »](#)

**Product images:**


Host: Rabbit  
 Target Name: NAA25  
 Sample Type: MCF7 Cell Lysate  
 Antibody Dilution: 1.0µg/ml

Host: Rabbit  
 Target Name: NAA25  
 Sample Tissue: Human MCF7 Whole Cell lysates  
 Antibody Dilution: 1ug/ml