

Product datasheet for **TA361122**

TICAM2 (TMED7-TICAM2) Rabbit Polyclonal Antibody

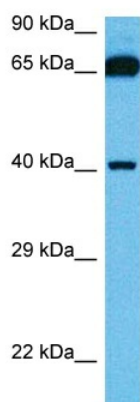
Product data:

Product Type:	Primary Antibodies
Applications:	WB
Reactivity:	Human
Host:	Rabbit
Clonality:	Polyclonal
Immunogen:	The immunogen is a synthetic peptide directed towards the N terminal region of human TICAM2
Specificity:	Expected reactivity: Human
Formulation:	Liquid. Purified antibody supplied in 1x PBS buffer with 0.09% (w/v) sodium azide and 2% sucrose. <i>Note that this product is shipped as lyophilized powder to China customers.</i>
Concentration:	lot specific
Purification:	Affinity purified
Conjugation:	Unconjugated
Storage:	For short term use, store at 2-8°C up to 1 week. For long term storage, store at -20°C in small aliquots to prevent freeze-thaw cycles.
Stability:	Shelf life: one year from despatch.
Predicted Protein Size:	44 kDa
Gene Name:	TMED7-TICAM2 readthrough
Database Link:	NP_001157940.1 Entrez Gene 100302736 Human Q86XR7-2
Background:	This locus represents naturally occurring read-through transcription between the neighboring transmembrane emp24 protein transport domain containing 7 (TMED7) and toll-like receptor adaptor molecule 2 (TICAM2) genes. Alternative splicing results in multiple transcript variants, one of which encodes a fusion protein that shares sequence identity with the products of each individual gene. This fusion product functions to negatively regulate the adaptor MyD88-independent toll-like receptor 4 pathway.



[View online »](#)

Product images:



Host: Rabbit
Target Name: TICAM2
Sample Type: HT1080 Cell Lysate
Antibody Dilution: 1.0 μ g/ml

Host: Rabbit
Target Name: TICAM2
Sample Tissue: Human HT1080 Whole Cell lysates
Antibody Dilution: 1 μ g/ml