

Product datasheet for **TA361121**

ATP1A2 Rabbit Polyclonal Antibody

Product data:

Product Type:	Primary Antibodies
Applications:	WB
Reactivity:	Human
Host:	Rabbit
Clonality:	Polyclonal
Immunogen:	The immunogen is a synthetic peptide directed towards the N terminal region of human ATP1A2
Specificity:	Expected reactivity: Human
Formulation:	Liquid. Purified antibody supplied in 1x PBS buffer with 0.09% (w/v) sodium azide and 2% sucrose. <i>Note that this product is shipped as lyophilized powder to China customers.</i>
Concentration:	lot specific
Purification:	Affinity purified
Conjugation:	Unconjugated
Storage:	For short term use, store at 2-8°C up to 1 week. For long term storage, store at -20°C in small aliquots to prevent freeze-thaw cycles.
Stability:	Shelf life: one year from despatch.
Predicted Protein Size:	112 kDa
Gene Name:	ATPase Na ⁺ /K ⁺ transporting subunit alpha 2
Database Link:	NP_000693.1 Entrez Gene 477 Human P50993



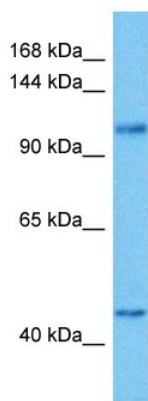
[View online »](#)

Background:

The protein encoded by this gene belongs to the family of P-type cation transport ATPases, and to the subfamily of Na⁺/K⁺ -ATPases. Na⁺/K⁺ -ATPase is an integral membrane protein responsible for establishing and maintaining the electrochemical gradients of Na and K ions across the plasma membrane. These gradients are essential for osmoregulation, for sodium-coupled transport of a variety of organic and inorganic molecules, and for electrical excitability of nerve and muscle. This enzyme is composed of two subunits, a large catalytic subunit (alpha) and a smaller glycoprotein subunit (beta). The catalytic subunit of Na⁺/K⁺ -ATPase is encoded by multiple genes. This gene encodes an alpha 2 subunit. Mutations in this gene result in familial basilar or hemiplegic migraines, and in a rare syndrome known as alternating hemiplegia of childhood.

Synonyms:

FHM2; KIAA0778; MGC59864; MHP2

Product images:

Host: Rabbit
Target Name: ATP1A2
Sample Type: Mesenchymoma Tumor Lysate
Antibody Dilution: 1.0µg/ml

Host: Rabbit
Target Name: ATP1A2
Sample Tissue: Human Mesenchymoma Tumor lysates
Antibody Dilution: 1ug/ml