

Product datasheet for TA361117

Syntaxin 6 (STX6) Rabbit Polyclonal Antibody

Product data:

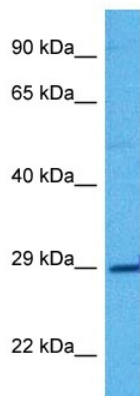
Product Type:	Primary Antibodies
Applications:	WB
Reactivity:	Human
Host:	Rabbit
Clonality:	Polyclonal
Immunogen:	The immunogen is a synthetic peptide directed towards the middle region of human STX6
Specificity:	Expected reactivity: Human
Formulation:	Liquid. Purified antibody supplied in 1x PBS buffer with 0.09% (w/v) sodium azide and 2% sucrose. <i>Note that this product is shipped as lyophilized powder to China customers.</i>
Concentration:	lot specific
Purification:	Affinity purified
Conjugation:	Unconjugated
Storage:	For short term use, store at 2–8°C up to 1 week. For long term storage, store at –20°C in small aliquots to prevent freeze–thaw cycles.
Stability:	Shelf life: one year from despatch.
Predicted Protein Size:	28 kDa
Gene Name:	syntaxin 6
Database Link:	NP_001273139.1 Entrez Gene 10228 Human O43752
Background:	The function of this protein remains unknown.
Synonyms:	STX6



Protein Families: Druggable Genome, Transmembrane

Protein Pathways: SNARE interactions in vesicular transport

Product images:



Host: Rabbit
Target Name: STX6
Sample Type: 293T Cell Lysate
Antibody Dilution: 1.0µg/ml

Host: Rabbit
Target Name: STX6
Sample Tissue: Human 293T Whole Cell lysates
Antibody Dilution: 1ug/ml