

## Product datasheet for **TA361116**

### RDH5 Rabbit Polyclonal Antibody

#### Product data:

Product Type:	Primary Antibodies
Applications:	WB
Reactivity:	Human
Host:	Rabbit
Clonality:	Polyclonal
Immunogen:	The immunogen is a synthetic peptide directed towards the middle terminal region of human RDH5
Specificity:	<b>Expected reactivity:</b> Human
Formulation:	Liquid. Purified antibody supplied in 1x PBS buffer with 0.09% (w/v) sodium azide and 2% sucrose. <i>Note that this product is shipped as lyophilized powder to China customers.</i>
Concentration:	lot specific
Purification:	Affinity purified
Conjugation:	Unconjugated
Storage:	For short term use, store at 2-8°C up to 1 week. For long term storage, store at -20°C in small aliquots to prevent freeze-thaw cycles.
Stability:	Shelf life: one year from despatch.
Predicted Protein Size:	34 kDa
Gene Name:	retinol dehydrogenase 5
Database Link:	<a href="#">NP_001186700.1</a> <a href="#">Entrez Gene 5959 Human Q92781</a>



[View online »](#)

**Background:**

This gene encodes an enzyme belonging to the short-chain dehydrogenases/reductases (SDR) family. This retinol dehydrogenase functions to catalyze the final step in the biosynthesis of 11-cis retinaldehyde, which is the universal chromophore of visual pigments. Mutations in this gene cause autosomal recessive fundus albipunctatus, a rare form of night blindness that is characterized by a delay in the regeneration of cone and rod photopigments. Alternative splicing results in multiple transcript variants. Read-through transcription also exists between this gene and the neighboring upstream BLOC1S1 (biogenesis of lysosomal organelles complex-1, subunit 1) gene.

**Synonyms:**

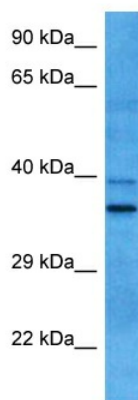
FLJ39337; FLJ97089; HSD17B9; RDH1; SDR9C5

**Protein Families:**

Druggable Genome

**Protein Pathways:**

Retinol metabolism

**Product images:**

Host: Rabbit  
Target Name: RDH5  
Sample Type: A172 Cell Lysate  
Antibody Dilution: 1.0µg/ml

Host: Rabbit  
Target Name: RDH5  
Sample Tissue: Human A172 Whole Cell lysates  
Antibody Dilution: 1 ug/ml