

Product datasheet for **TA361113**

HIP1R Rabbit Polyclonal Antibody

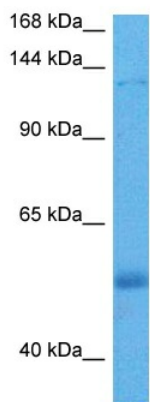
Product data:

Product Type:	Primary Antibodies
Applications:	WB
Reactivity:	Human
Host:	Rabbit
Clonality:	Polyclonal
Immunogen:	The immunogen is a synthetic peptide directed towards the C terminal region of human HIP1R
Specificity:	Expected reactivity: Human
Formulation:	Liquid. Purified antibody supplied in 1x PBS buffer with 0.09% (w/v) sodium azide and 2% sucrose.
Concentration:	lot specific
Purification:	Affinity purified
Conjugation:	Unconjugated
Storage:	For short term use, store at 2-8°C up to 1 week. For long term storage, store at -20°C in small aliquots to prevent freeze-thaw cycles.
Stability:	Shelf life: one year from despatch.
Predicted Protein Size:	117 kDa
Gene Name:	huntingtin interacting protein 1 related
Database Link:	NP_001290026.1 Entrez Gene 9026 Human O75146
Background:	Component of clathrin-coated pits and vesicles, that may link the endocytic machinery to the actin cytoskeleton. Binds 3-phosphoinositides (via ENTH domain). May act through the ENTH domain to promote cell survival by stabilizing receptor tyrosine kinases following ligand-induced endocytosis.
Synonyms:	FLJ14000; FLJ27022; Hip1-related; HIP3; HIP12; ILWEQ; KIAA0655; MGC47513



[View online »](#)

Product images:



Host: Rabbit
Target Name: HIP1R
Sample Type: Mesenchymoma Tumor Lysate
Antibody Dilution: 1.0 μ g/ml

Host: Rabbit
Target Name: HIP1R
Sample Tissue: Human Mesenchymoma Tumor lysates
Antibody Dilution: 1 ug/ml