

## Product datasheet for **TA361098**

### CEP290 Rabbit Polyclonal Antibody

#### Product data:

Product Type:	Primary Antibodies
Applications:	WB
Reactivity:	Human
Host:	Rabbit
Clonality:	Polyclonal
Immunogen:	The immunogen is a synthetic peptide directed towards the N terminal region of human CEP290
Specificity:	<b>Expected reactivity:</b> Human
Formulation:	Liquid. Purified antibody supplied in 1x PBS buffer with 0.09% (w/v) sodium azide and 2% sucrose. <i>Note that this product is shipped as lyophilized powder to China customers.</i>
Concentration:	lot specific
Purification:	Affinity purified
Conjugation:	Unconjugated
Storage:	For short term use, store at 2-8°C up to 1 week. For long term storage, store at -20°C in small aliquots to prevent freeze-thaw cycles.
Stability:	Shelf life: one year from despatch.
Predicted Protein Size:	88 kDa
Gene Name:	centrosomal protein 290
Database Link:	<a href="#">NP_079390.3</a> <a href="#">Entrez Gene 80184 Human</a> <a href="#">Q05BJ6</a>



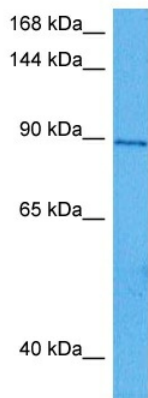
[View online »](#)

**Background:**

This gene encodes a protein with 13 putative coiled-coil domains, a region with homology to SMC chromosome segregation ATPases, six KID motifs, three tropomyosin homology domains and an ATP/GTP binding site motif A. The protein is localized to the centrosome and cilia and has sites for N-glycosylation, tyrosine sulfation, phosphorylation, N-myristoylation, and amidation. Mutations in this gene have been associated with Joubert syndrome and nephronophthisis and the presence of antibodies against this protein is associated with several forms of cancer.

**Synonyms:**

3H11AG; BBS14; CT87; FLJ13615; FLJ21979; JBTS5; JBTS6; KIAA0373; LCA10; MKS4; Nephrocystin-6; nephrocystin-6; NPHP6; rd16; SLSN6

**Product images:**

Host: Rabbit  
Target Name: CEP290  
Sample Type: Jurkat Cell Lysate  
Antibody Dilution: 1.0µg/ml

Host: Rabbit  
Target Name: CEP290  
Sample Tissue: Human Jurkat Whole Cell lysates  
Antibody Dilution: 1ug/ml