

Product datasheet for **TA361093**

NPHS2 Rabbit Polyclonal Antibody

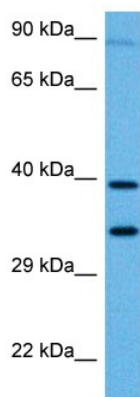
Product data:

Product Type:	Primary Antibodies
Applications:	WB
Reactivity:	Human
Host:	Rabbit
Clonality:	Polyclonal
Immunogen:	The immunogen is a synthetic peptide directed towards the N terminal region of human NPHS2
Specificity:	Expected reactivity: Human
Formulation:	Liquid. Purified antibody supplied in 1x PBS buffer with 0.09% (w/v) sodium azide and 2% sucrose. <i>Note that this product is shipped as lyophilized powder to China customers.</i>
Concentration:	lot specific
Purification:	Affinity purified
Conjugation:	Unconjugated
Storage:	For short term use, store at 2-8°C up to 1 week. For long term storage, store at -20°C in small aliquots to prevent freeze-thaw cycles.
Stability:	Shelf life: one year from despatch.
Predicted Protein Size:	34 kDa
Gene Name:	NPHS2 podocin
Database Link:	NP_001284504.1 Entrez Gene 7827 Human Q9NP85-2
Background:	his gene encodes a protein that plays a role in the regulation of glomerular permeability. Mutations in this gene cause steroid-resistant nephrotic syndrome. Alternative splicing results in multiple transcript variants.
Synonyms:	PDCN; podocin; SRN1
Protein Families:	Transmembrane



[View online »](#)

Product images:



Host: Rabbit
Target Name: NPHS2
Sample Type: NCI-H226 Cell Lysate
Antibody Dilution: 1.0 μ g/ml

Host: Rabbit
Target Name: NPHS2
Sample Tissue: Human NCI-H226 Whole Cell
lysates
Antibody Dilution: 1 μ g/ml