

Product datasheet for **TA361090**

ZNF346 Rabbit Polyclonal Antibody

Product data:

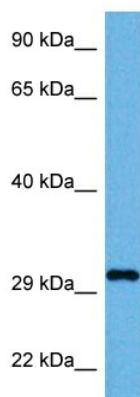
| | |
|-------------------------|--|
| Product Type: | Primary Antibodies |
| Applications: | WB |
| Reactivity: | Human |
| Host: | Rabbit |
| Clonality: | Polyclonal |
| Immunogen: | The immunogen is a synthetic peptide directed towards the middle region of human ZNF346 |
| Specificity: | Expected reactivity: Human |
| Formulation: | Liquid. Purified antibody supplied in 1x PBS buffer with 0.09% (w/v) sodium azide and 2% sucrose. <i>Note that this product is shipped as lyophilized powder to China customers.</i> |
| Concentration: | lot specific |
| Purification: | Affinity purified |
| Conjugation: | Unconjugated |
| Storage: | For short term use, store at 2-8°C up to 1 week. For long term storage, store at -20°C in small aliquots to prevent freeze-thaw cycles. |
| Stability: | Shelf life: one year from despatch. |
| Predicted Protein Size: | 32 kDa |
| Gene Name: | zinc finger protein 346 |
| Database Link: | NP_001295142.1 Entrez Gene 23567 Human Q9UL40 |
| Background: | The protein encoded by this gene is a nucleolar, zinc finger protein that preferentially binds to double-stranded (ds) RNA or RNA/DNA hybrids, rather than DNA alone. Mutational studies indicate that the zinc finger domains are not only essential for dsRNA binding, but are also required for its nucleolar localization. The encoded protein may be involved in cell growth and survival. It plays a role in protecting neurons by inhibiting cell cycle re-entry via stimulation of p21 gene expression. Alternative splicing of this gene results in multiple transcript variants. |



[View online »](#)

Synonyms: DKFZp547M223; JAZ; Zfp346

Product images:



Host: Rabbit
Target Name: ZNF346
Sample Type: RPMI-8226 Cell Lysate
Antibody Dilution: 1.0µg/ml

Host: Rabbit
Target Name: ZNF346
Sample Tissue: Human RPMI 8226 Whole Cell lysates
Antibody Dilution: 1ug/ml