

## Product datasheet for **TA361084**

### CTRP5 (C1QTNF5) Rabbit Polyclonal Antibody

#### Product data:

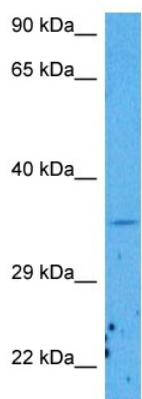
Product Type:	Primary Antibodies
Applications:	WB
Reactivity:	Human
Host:	Rabbit
Clonality:	Polyclonal
Immunogen:	The immunogen is a synthetic peptide directed towards the middle region of human C1QTNF5
Specificity:	<b>Expected reactivity:</b> Human
Formulation:	Liquid. Purified antibody supplied in 1x PBS buffer with 0.09% (w/v) sodium azide and 2% sucrose. <i>Note that this product is shipped as lyophilized powder to China customers.</i>
Concentration:	lot specific
Purification:	Affinity purified
Conjugation:	Unconjugated
Storage:	For short term use, store at 2-8°C up to 1 week. For long term storage, store at -20°C in small aliquots to prevent freeze-thaw cycles.
Stability:	Shelf life: one year from despatch.
Predicted Protein Size:	32 kDa
Gene Name:	C1q and tumor necrosis factor related protein 5
Database Link:	<a href="#">NP_001265360.1</a> <a href="#">Entrez Gene 114902 Human</a> <a href="#">Q9BXJ2-2</a>
Background:	This gene encodes a member of a family of proteins that function as components of basement membranes and may play a role in cell adhesion. Mutations in this gene have been associated with late-onset retinal degeneration. The protein may be encoded by either a bicistronic transcript including sequence from the upstream membrane frizzled-related protein gene (MFRP), or by a monocistronic transcript expressed from an internal promoter.
Synonyms:	CTRP5; DKFZp586B0621; FLJ30570; LORD



[View online »](#)

Protein Families: Secreted Protein

### Product images:



Host: Rabbit  
Target Name: C1QTNF5  
Sample Type: 293T Cell Lysate  
Antibody Dilution: 1.0µg/ml

Host: Rabbit  
Target Name: C1QTNF5  
Sample Tissue: Human 293T Whole Cell lysates  
Antibody Dilution: 1ug/ml