

## Product datasheet for **TA361082**

### RBKS Rabbit Polyclonal Antibody

#### Product data:

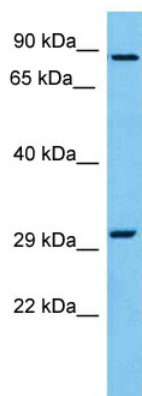
Product Type:	Primary Antibodies
Applications:	WB
Reactivity:	Human
Host:	Rabbit
Clonality:	Polyclonal
Immunogen:	The immunogen is a synthetic peptide directed towards the N terminal region of human RBKS
Specificity:	<b>Expected reactivity:</b> Human
Formulation:	Liquid. Purified antibody supplied in 1x PBS buffer with 0.09% (w/v) sodium azide and 2% sucrose. <i>Note that this product is shipped as lyophilized powder to China customers.</i>
Concentration:	lot specific
Purification:	Affinity purified
Conjugation:	Unconjugated
Storage:	For short term use, store at 2-8°C up to 1 week. For long term storage, store at -20°C in small aliquots to prevent freeze-thaw cycles.
Stability:	Shelf life: one year from despatch.
Predicted Protein Size:	31 kDa
Gene Name:	ribokinase
Database Link:	<a href="#">NP_001274509.1</a> <a href="#">Entrez Gene 64080 Human</a> <a href="#">Q9H477-2</a>
Background:	This gene encodes a member of the carbohydrate kinase PfkB family. The encoded protein phosphorylates ribose to form ribose-5-phosphate in the presence of ATP and magnesium as a first step in ribose metabolism. Alternative splicing results in multiple transcript variants.
Synonyms:	5230400M11Rik; DKFZp686G13268; RBSK; ribokinase
Protein Families:	Druggable Genome



[View online »](#)

Protein Pathways: Pentose phosphate pathway

### Product images:



Host: Rabbit  
Target Name: RBKS  
Sample Type: Du145 Cell Lysate  
Antibody Dilution: 1.0 $\mu$ g/ml

Host: Rabbit  
Target Name: RBKS  
Sample Tissue: Human Du145 Whole Cell lysates  
Antibody Dilution: 1 $\mu$ g/ml