

Product datasheet for **TA361080**

RANBP6 Rabbit Polyclonal Antibody

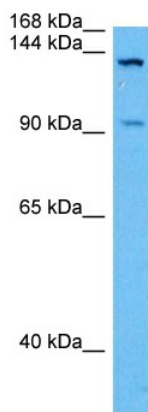
Product data:

Product Type:	Primary Antibodies
Applications:	WB
Reactivity:	Human
Host:	Rabbit
Clonality:	Polyclonal
Immunogen:	The immunogen is a synthetic peptide directed towards the middle terminal region of human RANBP6
Specificity:	Expected reactivity: Human
Formulation:	Liquid. Purified antibody supplied in 1x PBS buffer with 0.09% (w/v) sodium azide and 2% sucrose.
Concentration:	lot specific
Purification:	Affinity purified
Conjugation:	Unconjugated
Storage:	For short term use, store at 2-8°C up to 1 week. For long term storage, store at -20°C in small aliquots to prevent freeze-thaw cycles.
Stability:	Shelf life: one year from despatch.
Predicted Protein Size:	121 kDa
Gene Name:	RAN binding protein 6
Database Link:	NP_001230131.1 Entrez Gene 26953 Human O60518
Background:	May function in nuclear protein import as nuclear transport receptor.
Synonyms:	FLJ54311



[View online »](#)

Product images:



Host: Rabbit
Target Name: RANBP6
Sample Type: LN18 Cell Lysate
Antibody Dilution: 1.0 μ g/ml

Host: Rabbit
Target Name: RANBP6
Sample Tissue: Human LN18 Whole Cell lysates
Antibody Dilution: 1ug/ml