

Product datasheet for **TA361071**

D Amino Acid Oxidase (DAO) Rabbit Polyclonal Antibody

Product data:

| | |
|-------------------------|---|
| Product Type: | Primary Antibodies |
| Applications: | WB |
| Reactivity: | Human |
| Host: | Rabbit |
| Clonality: | Polyclonal |
| Immunogen: | The immunogen is a synthetic peptide directed towards the middle region of human DAO |
| Specificity: | Expected reactivity: Human |
| Formulation: | Liquid. Purified antibody supplied in 1x PBS buffer with 0.09% (w/v) sodium azide and 2% sucrose. <i>Note that this product is shipped as lyophilized powder to China customers.</i> |
| Concentration: | lot specific |
| Purification: | Affinity purified |
| Conjugation: | Unconjugated |
| Storage: | For short term use, store at 2-8°C up to 1 week. For long term storage, store at -20°C in small aliquots to prevent freeze-thaw cycles. |
| Stability: | Shelf life: one year from despatch. |
| Predicted Protein Size: | 38 kDa |
| Gene Name: | D-amino-acid oxidase |
| Database Link: | NP_001908.3 Entrez Gene 1610 Human P14920 |
| Background: | This gene encodes the peroxisomal enzyme D-amino acid oxidase. The enzyme is a flavoprotein which uses flavin adenine dinucleotide (FAD) as its prosthetic group. Its substrates include a wide variety of D-amino acids, but it is inactive on the naturally occurring L-amino acids. Its biological function is not known; it may act as a detoxifying agent which removes D-amino acids that accumulate during aging. In mice, it degrades D-serine, a co-agonist of the NMDA receptor. This gene may play a role in the pathophysiology of schizophrenia. |



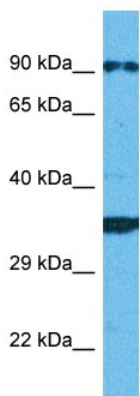
[View online »](#)

Synonyms: DAAO; DAMOX; MGC35381; OXDA

Protein Families: Druggable Genome

Protein Pathways: Arginine and proline metabolism, D-Arginine and D-ornithine metabolism, Glycine, serine and threonine metabolism, Metabolic pathways

Product images:



Host: Rabbit
 Target Name: DAO
 Sample Type: DLD1 Cell Lysate
 Antibody Dilution: 1.0µg/ml

Host: Rabbit
 Target Name: DAO
 Sample Tissue: Human DLD1 Whole Cell lysates
 Antibody Dilution: 1ug/ml