

Product datasheet for **TA361064**

CACTIN Rabbit Polyclonal Antibody

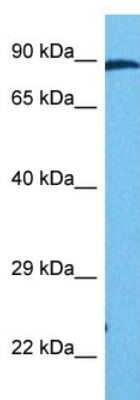
Product data:

Product Type:	Primary Antibodies
Applications:	WB
Reactivity:	Human
Host:	Rabbit
Clonality:	Polyclonal
Immunogen:	The immunogen is a synthetic peptide directed towards the N terminal region of human C19ORF29
Specificity:	Expected reactivity: Human
Formulation:	Liquid. Purified antibody supplied in 1x PBS buffer with 0.09% (w/v) sodium azide and 2% sucrose. <i>Note that this product is shipped as lyophilized powder to China customers.</i>
Concentration:	lot specific
Purification:	Affinity purified
Conjugation:	Unconjugated
Storage:	For short term use, store at 2-8°C up to 1 week. For long term storage, store at -20°C in small aliquots to prevent freeze-thaw cycles.
Stability:	Shelf life: one year from despatch.
Predicted Protein Size:	83 kDa
Gene Name:	cactin, spliceosome C complex subunit
Database Link:	NP_001074012.1 Entrez Gene 58509 Human Q8WUQ7
Synonyms:	2510012J08Rik; RGD1563634



[View online »](#)

Product images:



Host: Rabbit
Target Name: C19orf29
Sample Type: Stomach Tumor Lysate
Antibody Dilution: 1.0 μ g/ml

Host: Rabbit
Target Name: C19ORF29
Sample Tissue: Human Stomach Tumor lysates
Antibody Dilution: 1 μ g/ml