

## Product datasheet for **TA361063**

### SPRED1 Rabbit Polyclonal Antibody

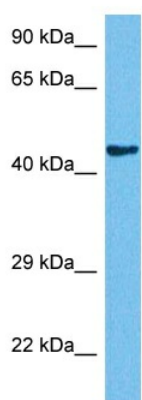
#### Product data:

Product Type:	Primary Antibodies
Applications:	WB
Reactivity:	Human
Host:	Rabbit
Clonality:	Polyclonal
Immunogen:	The immunogen is a synthetic peptide directed towards the middle region of human SPRED1
Specificity:	<b>Expected reactivity:</b> Human
Formulation:	Liquid. Purified antibody supplied in 1x PBS buffer with 0.09% (w/v) sodium azide and 2% sucrose. <i>Note that this product is shipped as lyophilized powder to China customers.</i>
Concentration:	lot specific
Purification:	Affinity purified
Conjugation:	Unconjugated
Storage:	For short term use, store at 2-8°C up to 1 week. For long term storage, store at -20°C in small aliquots to prevent freeze-thaw cycles.
Stability:	Shelf life: one year from despatch.
Predicted Protein Size:	48 kDa
Gene Name:	sprouty related EVH1 domain containing 1
Database Link:	<a href="#">NP_689807.1</a> <a href="#">Entrez Gene 161742 Human</a> <a href="#">Q7Z699</a>
Background:	The protein encoded by this gene is a member of the Sprouty family of proteins and is phosphorylated by tyrosine kinase in response to several growth factors. The encoded protein can act as a homodimer or as a heterodimer with SPRED2 to regulate activation of the MAP kinase cascade. Defects in this gene are a cause of neurofibromatosis type 1-like syndrome (NFLS).
Synonyms:	FLJ33903; hSpred1; NFLS; Spred-1
Protein Pathways:	Jak-STAT signaling pathway



[View online >](#)

## Product images:



Host: Rabbit  
Target Name: SPRED1  
Sample Type: HeLa Cell Lysate  
Antibody Dilution: 1.0 $\mu$ g/ml

Host: Rabbit  
Target Name: SPRED1  
Sample Tissue: Human HeLa Whole Cell lysates  
Antibody Dilution: 1 $\mu$ g/ml