

## Product datasheet for **TA361062**

### **MAGIX Rabbit Polyclonal Antibody**

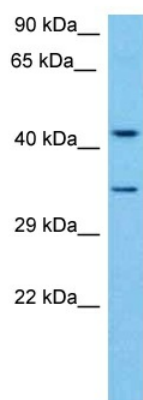
#### **Product data:**

Product Type:	Primary Antibodies
Applications:	WB
Reactivity:	Human
Host:	Rabbit
Clonality:	Polyclonal
Immunogen:	The immunogen is a synthetic peptide directed towards the C terminal region of human MAGIX
Specificity:	<b>Expected reactivity:</b> Human
Formulation:	Liquid. Purified antibody supplied in 1x PBS buffer with 0.09% (w/v) sodium azide and 2% sucrose.
Concentration:	lot specific
Purification:	Affinity purified
Conjugation:	Unconjugated
Storage:	For short term use, store at 2-8°C up to 1 week. For long term storage, store at -20°C in small aliquots to prevent freeze-thaw cycles.
Stability:	Shelf life: one year from despatch.
Predicted Protein Size:	35 kDa
Gene Name:	MAGI family member, X-linked
Database Link:	<a href="#">NP_001093151.2</a> <a href="#">Entrez Gene 79917 Human</a> <a href="#">Q9H6Y5</a>
Background:	The function of this protein remains unknown.
Synonyms:	FLJ21687; JM10; MGC138889; PDZX



[View online »](#)

## Product images:



Host: Rabbit  
 Target Name: MAGIX  
 Sample Type: ACHN Cell Lysate  
 Antibody Dilution: 1.0µg/ml

Host: Rabbit  
 Target Name: MAGIX  
 Sample Tissue: Human ACHN Whole Cell lysates  
 Antibody Dilution: 1ug/ml