

Product datasheet for **TA361059**

DDI2 Rabbit Polyclonal Antibody

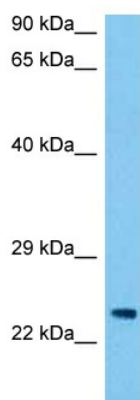
Product data:

Product Type:	Primary Antibodies
Applications:	WB
Reactivity:	Human
Host:	Rabbit
Clonality:	Polyclonal
Immunogen:	The immunogen is a synthetic peptide directed towards the middle region of human DDI2
Specificity:	Expected reactivity: Human
Formulation:	Liquid. Purified antibody supplied in 1x PBS buffer with 0.09% (w/v) sodium azide and 2% sucrose. <i>Note that this product is shipped as lyophilized powder to China customers.</i>
Concentration:	lot specific
Purification:	Affinity purified
Conjugation:	Unconjugated
Storage:	For short term use, store at 2-8°C up to 1 week. For long term storage, store at -20°C in small aliquots to prevent freeze-thaw cycles.
Stability:	Shelf life: one year from despatch.
Predicted Protein Size:	23 kDa
Gene Name:	DNA damage inducible 1 homolog 2
Database Link:	NP_115717.3 Entrez Gene 84301 Human Q5TDH0-2
Background:	Aspartic protease that mediates the cleavage of NFE2L1/NRF1 at 'Leu-104', thereby promoting release of NFE2L1/NRF1 from the endoplasmic reticulum membrane. Ubiquitination of NFE2L1/NRF1 is a prerequisite for cleavage, suggesting that DDI2 specifically recognizes and binds ubiquitinated NFE2L1/NRF1.
Synonyms:	MGC14844; RP4-680D5.5
Protein Families:	Druggable Genome



[View online »](#)

Product images:



Host: Rabbit
Target Name: DDI2
Sample Type: K562 Cell Lysate
Antibody Dilution: 1.0 μ g/ml

Host: Rabbit
Target Name: DDI2
Sample Tissue: Human K562 Whole Cell lysates
Antibody Dilution: 1 μ g/ml