

Product datasheet for **TA361041**

FAM113A (PCED1A) Rabbit Polyclonal Antibody

Product data:

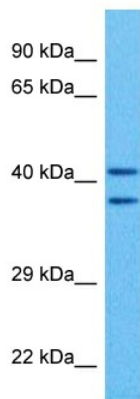
Product Type:	Primary Antibodies
Applications:	WB
Reactivity:	Human
Host:	Rabbit
Clonality:	Polyclonal
Immunogen:	The immunogen is a synthetic peptide directed towards the middle region of human FAM113A
Specificity:	Expected reactivity: Human
Formulation:	Liquid. Purified antibody supplied in 1x PBS buffer with 0.09% (w/v) sodium azide and 2% sucrose.
Concentration:	lot specific
Purification:	Affinity purified
Conjugation:	Unconjugated
Storage:	For short term use, store at 2-8°C up to 1 week. For long term storage, store at -20°C in small aliquots to prevent freeze-thaw cycles.
Stability:	Shelf life: one year from despatch.
Predicted Protein Size:	44 kDa
Gene Name:	PC-esterase domain containing 1A
Database Link:	NP_001258097.1 Entrez Gene 64773 Human Q9H1Q7-2
Background:	The protein encoded by this gene is a member of the GDSL/SGNH superfamily. Members of this family are hydrolytic enzymes with esterase and lipase activity and broad substrate specificity. This protein belongs to the Pmr5-Cas1p-esterase subfamily in that it contains the catalytic triad comprised of serine, aspartate and histidine and lacks two conserved regions (glycine after strand S2 and GxND motif). A pseudogene of this gene has been identified on the long arm of chromosome 2. Alternative splicing results in multiple transcript variants that encode different protein isoforms.



[View online »](#)

Synonyms: bA12M19.1; C20orf81; FAM113A

Product images:



Host: Rabbit
Target Name: FAM113A
Sample Type: Stomach Tumor Lysate
Antibody Dilution: 1.0 μ g/ml

Host: Rabbit
Target Name: FAM113A
Sample Tissue: Human Stomach Tumor lysates
Antibody Dilution: 1 μ g/ml