

## Product datasheet for **TA361037**

### GDF6 Rabbit Polyclonal Antibody

#### Product data:

Product Type:	Primary Antibodies
Applications:	WB
Reactivity:	Human
Host:	Rabbit
Clonality:	Polyclonal
Immunogen:	The immunogen is a synthetic peptide directed towards the N terminal region of human GDF6
Specificity:	<b>Expected reactivity:</b> Human
Formulation:	Liquid. Purified antibody supplied in 1x PBS buffer with 0.09% (w/v) sodium azide and 2% sucrose. <i>Note that this product is shipped as lyophilized powder to China customers.</i>
Concentration:	lot specific
Purification:	Affinity purified
Conjugation:	Unconjugated
Storage:	For short term use, store at 2-8°C up to 1 week. For long term storage, store at -20°C in small aliquots to prevent freeze-thaw cycles.
Stability:	Shelf life: one year from despatch.
Predicted Protein Size:	50 kDa
Gene Name:	growth differentiation factor 6
Database Link:	<a href="#">NP_001001557.1</a> <a href="#">Entrez Gene 392255 Human</a> <a href="#">Q6KF10</a>
Background:	This gene encodes a member of the bone morphogenetic protein (BMP) family and the TGF-beta superfamily of secreted signaling molecules. It is required for normal formation of some bones and joints in the limbs, skull, and axial skeleton. Mutations in this gene result in colobomata, which are congenital abnormalities in ocular development, and in Klippel-Feil syndrome (KFS), which is a congenital disorder of spinal segmentation.
Synonyms:	BMP13; CDMP2; GDF-6; GDF16; KFS; KFSL; MCOP4; MGC158100; MGC158101; SCDO4; SGM1

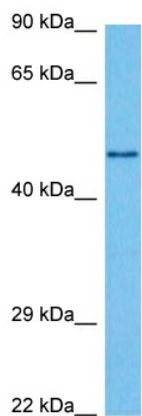


[View online »](#)

Protein Families: Druggable Genome, Secreted Protein

Protein Pathways: TGF-beta signaling pathway

### Product images:



Host: Rabbit  
Target Name: GDF6  
Sample Type: K562 Cell Lysate  
Antibody Dilution: 1.0 $\mu$ g/ml

Host: Rabbit  
Target Name: GDF6  
Sample Tissue: Human K562 Whole Cell lysates  
Antibody Dilution: 1 $\mu$ g/ml