

## Product datasheet for **TA361034**

### MFSD6 Rabbit Polyclonal Antibody

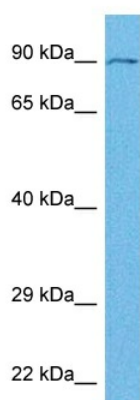
#### Product data:

Product Type:	Primary Antibodies
Applications:	WB
Reactivity:	Human
Host:	Rabbit
Clonality:	Polyclonal
Immunogen:	The immunogen is a synthetic peptide directed towards the N terminal region of human MFSD6
Specificity:	<b>Expected reactivity:</b> Human
Formulation:	Liquid. Purified antibody supplied in 1x PBS buffer with 0.09% (w/v) sodium azide and 2% sucrose.
Concentration:	lot specific
Purification:	Affinity purified
Conjugation:	Unconjugated
Storage:	For short term use, store at 2-8°C up to 1 week. For long term storage, store at -20°C in small aliquots to prevent freeze-thaw cycles.
Stability:	Shelf life: one year from despatch.
Predicted Protein Size:	88 kDa
Gene Name:	major facilitator superfamily domain containing 6
Database Link:	<a href="#">NP_060164.3</a> <a href="#">Entrez Gene 54842 Human</a> <a href="#">Q6ZSS7</a>
Background:	Â The function of this protein remains unknown.
Synonyms:	FLJ20160; MMR2; OTTHUMP00000163510
Protein Families:	Transmembrane



[View online »](#)

## Product images:



Host: Rabbit  
Target Name: MFSD6  
Sample Type: MCF7 Cell Lysate  
Antibody Dilution: 1.0 $\mu$ g/ml

Host: Rabbit  
Target Name: MFSD6  
Sample Tissue: Human MCF7 Whole Cell lysates  
Antibody Dilution: 1  $\mu$ g/ml