

Product datasheet for **TA361031**

ALS2CR2 (STRADB) Rabbit Polyclonal Antibody

Product data:

Product Type:	Primary Antibodies
Applications:	WB
Reactivity:	Human
Host:	Rabbit
Clonality:	Polyclonal
Immunogen:	The immunogen is a synthetic peptide directed towards the middle region of human STRADB
Specificity:	Expected reactivity: Human
Formulation:	Liquid. Purified antibody supplied in 1x PBS buffer with 0.09% (w/v) sodium azide and 2% sucrose. <i>Note that this product is shipped as lyophilized powder to China customers.</i>
Concentration:	lot specific
Purification:	Affinity purified
Conjugation:	Unconjugated
Storage:	For short term use, store at 2-8°C up to 1 week. For long term storage, store at -20°C in small aliquots to prevent freeze-thaw cycles.
Stability:	Shelf life: one year from despatch.
Predicted Protein Size:	46 kDa
Gene Name:	STE20-related kinase adaptor beta
Database Link:	NP_001193793.1 Entrez Gene 55437 Human Q9C0K7



[View online »](#)

Background:

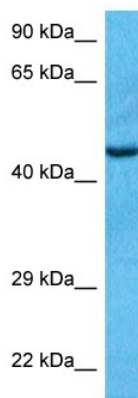
This gene encodes a protein that belongs to the serine/threonine protein kinase STE20 subfamily. One of the active site residues in the protein kinase domain of this protein is altered, and it is thus a pseudokinase. This protein is a component of a complex involved in the activation of serine/threonine kinase 11, a master kinase that regulates cell polarity and energy-generating metabolism. This complex regulates the relocation of this kinase from the nucleus to the cytoplasm, and it is essential for G1 cell cycle arrest mediated by this kinase. The protein encoded by this gene can also interact with the X chromosome-linked inhibitor of apoptosis protein, and this interaction enhances the anti-apoptotic activity of this protein via the JNK1 signal transduction pathway. Two pseudogenes, located on chromosomes 1 and 7, have been found for this gene. Alternatively spliced transcript variants encoding different isoforms have been found for this gene.

Synonyms:

ALS2CR2; CALS-21; ILPIP; ILPIPA; MGC102916; PAPK; PRO1038

Protein Families:

Druggable Genome, Protein Kinase

Product images:


Host: Rabbit
Target Name: STRADB
Sample Type: COLO205 Cell Lysate
Antibody Dilution: 1.0µg/ml

Host: Rabbit
Target Name: STRADB
Sample Tissue: Human COLO205 Whole Cell lysates
Antibody Dilution: 1ug/ml