

Product datasheet for **TA361026**

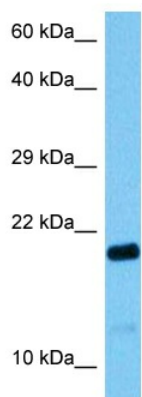
C19orf50 (KXD1) Rabbit Polyclonal Antibody

Product data:

Product Type:	Primary Antibodies
Applications:	WB
Reactivity:	Human
Host:	Rabbit
Clonality:	Polyclonal
Immunogen:	The immunogen is a synthetic peptide directed towards the C terminal region of human C19ORF50
Specificity:	Expected reactivity: Human
Formulation:	Liquid. Purified antibody supplied in 1x PBS buffer with 0.09% (w/v) sodium azide and 2% sucrose. <i>Note that this product is shipped as lyophilized powder to China customers.</i>
Concentration:	lot specific
Purification:	Affinity purified
Conjugation:	Unconjugated
Storage:	For short term use, store at 2-8°C up to 1 week. For long term storage, store at -20°C in small aliquots to prevent freeze-thaw cycles.
Stability:	Shelf life: one year from despatch.
Predicted Protein Size:	19 kDa
Gene Name:	KxDL motif containing 1
Database Link:	NP_001165419.1 Entrez Gene 79036 Human Q9BQD3
Synonyms:	0610030B01Rik; 2810422J05Rik; C78305; Kxd1



[View online »](#)

Product images:

Host: Rabbit
Target Name: C19orf50
Sample Type: Testicular Tumor Lysate
Antibody Dilution: 1.0 μ g/ml

Host: Rabbit
Target Name: C19ORF50
Sample Tissue: Human Testicular Tumor lysates
Antibody Dilution: 1 μ g/ml