

Product datasheet for **TA361023**

IL21 Receptor (IL21R) Rabbit Polyclonal Antibody

Product data:

Product Type:	Primary Antibodies
Applications:	WB
Reactivity:	Human
Host:	Rabbit
Clonality:	Polyclonal
Immunogen:	The immunogen is a synthetic peptide directed towards the middle region of human IL21R
Specificity:	Expected reactivity: Human
Formulation:	Liquid. Purified antibody supplied in 1x PBS buffer with 0.09% (w/v) sodium azide and 2% sucrose. <i>Note that this product is shipped as lyophilized powder to China customers.</i>
Concentration:	lot specific
Purification:	Affinity purified
Conjugation:	Unconjugated
Storage:	For short term use, store at 2-8°C up to 1 week. For long term storage, store at -20°C in small aliquots to prevent freeze-thaw cycles.
Stability:	Shelf life: one year from despatch.
Predicted Protein Size:	59 kDa
Gene Name:	interleukin 21 receptor
Database Link:	NP_068570.1 Entrez Gene 50615 Human Q9HBE5



[View online »](#)

Background:

The protein encoded by this gene is a cytokine receptor for interleukin 21 (IL21). It belongs to the type I cytokine receptors, and has been shown to form a heterodimeric receptor complex with the common gamma-chain, a receptor subunit also shared by the receptors for interleukin 2, 4, 7, 9, and 15. This receptor transduces the growth promoting signal of IL21, and is important for the proliferation and differentiation of T cells, B cells, and natural killer (NK) cells. The ligand binding of this receptor leads to the activation of multiple downstream signaling molecules, including JAK1, JAK3, STAT1, and STAT3. Knockout studies of a similar gene in mouse suggest a role for this gene in regulating immunoglobulin production. Three alternatively spliced transcript variants have been described.

Synonyms:

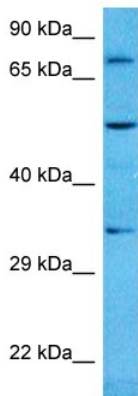
IL-21R; MGC10967; NILR

Protein Families:

Druggable Genome, Transmembrane

Protein Pathways:

Cytokine-cytokine receptor interaction, Jak-STAT signaling pathway

Product images:


Host: Rabbit
 Target Name: IL21R
 Sample Type: NCI-H226 Cell Lysate
 Antibody Dilution: 1.0µg/ml

Host: Rabbit
 Target Name: IL21R
 Sample Tissue: Human NCI-H226 Whole Cell lysates
 Antibody Dilution: 1 ug/ml