

## Product datasheet for **TA361020**

### **PRA1 (RABAC1) Rabbit Polyclonal Antibody**

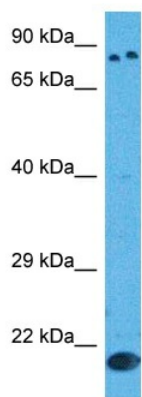
#### **Product data:**

Product Type:	Primary Antibodies
Applications:	WB
Reactivity:	Human
Host:	Rabbit
Clonality:	Polyclonal
Immunogen:	The immunogen is a synthetic peptide directed towards the N terminal region of human RABAC1
Specificity:	<b>Expected reactivity:</b> Human
Formulation:	Liquid. Purified antibody supplied in 1x PBS buffer with 0.09% (w/v) sodium azide and 2% sucrose.
Concentration:	lot specific
Purification:	Affinity purified
Conjugation:	Unconjugated
Storage:	For short term use, store at 2-8°C up to 1 week. For long term storage, store at -20°C in small aliquots to prevent freeze-thaw cycles.
Stability:	Shelf life: one year from despatch.
Gene Name:	Rab acceptor 1
Database Link:	<a href="#">NP_006414.2</a> <a href="#">Entrez Gene 10567 Human</a> <a href="#">Q9UI14</a>
Background:	General Rab protein regulator required for vesicle formation from the Golgi complex. May control vesicle docking and fusion by mediating the action of Rab GTPases to the SNARE complexes. In addition it inhibits the removal of Rab GTPases from the membrane by GDI.
Synonyms:	PRA1; PRAF1; YIP3
Protein Families:	Transmembrane



[View online »](#)

## Product images:



Host: Rabbit  
Target Name: RABAC1  
Sample Type: MCF7 Cell Lysate  
Antibody Dilution: 1.0 $\mu$ g/ml

Host: Rabbit  
Target Name: RABAC1  
Sample Tissue: Human MCF7 Whole Cell lysates  
Antibody Dilution: 1 $\mu$ g/ml