

Product datasheet for **TA361018**

SLITRK2 Rabbit Polyclonal Antibody

Product data:

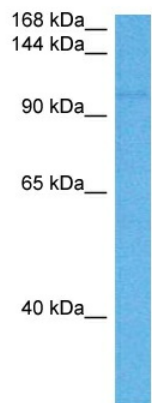
Product Type:	Primary Antibodies
Applications:	WB
Reactivity:	Human
Host:	Rabbit
Clonality:	Polyclonal
Immunogen:	The immunogen is a synthetic peptide directed towards the C terminal region of human SLITRK2
Specificity:	Expected reactivity: Human
Formulation:	Liquid. Purified antibody supplied in 1x PBS buffer with 0.09% (w/v) sodium azide and 2% sucrose. <i>Note that this product is shipped as lyophilized powder to China customers.</i>
Concentration:	lot specific
Purification:	Affinity purified
Conjugation:	Unconjugated
Storage:	For short term use, store at 2-8°C up to 1 week. For long term storage, store at -20°C in small aliquots to prevent freeze-thaw cycles.
Stability:	Shelf life: one year from despatch.
Predicted Protein Size:	95 kDa
Gene Name:	SLIT and NTRK like family member 2
Database Link:	NP_001137475.1 Entrez Gene 84631 Human Q9H156
Background:	This gene encodes an integral membrane protein that contains two N-terminal leucine-rich repeats domains and contains C-terminal regions similar to neurotrophin receptors. The encoded protein may play a role in modulating neurite activity. Alternatively spliced transcript variants encoding the same protein have been described.
Synonyms:	CXorf2; DKFZp451E1911; KIAA1854; MGC129912; MGC129913; OTTHUMP00000024190; SLITL1



[View online »](#)

Protein Families: Transmembrane

Product images:



Host: Rabbit
Target Name: SLITRK2
Sample Type: Jurkat Cell Lysate
Antibody Dilution: 1.0 μ g/ml

Host: Rabbit
Target Name: SLITRK2
Sample Tissue: Human Jurkat Whole Cell lysates
Antibody Dilution: 1 μ g/ml