

## Product datasheet for **TA361015**

### Integrin alpha 1 (ITGA1) Rabbit Polyclonal Antibody

#### Product data:

Product Type:	Primary Antibodies
Applications:	WB
Reactivity:	Human, Mouse
Host:	Rabbit
Clonality:	Polyclonal
Immunogen:	The immunogen is a synthetic peptide directed towards the middle region of human ITGA1
Specificity:	<b>Expected reactivity:</b> Human
Formulation:	Liquid. Purified antibody supplied in 1x PBS buffer with 0.09% (w/v) sodium azide and 2% sucrose. <i>Note that this product is shipped as lyophilized powder to China customers.</i>
Concentration:	lot specific
Purification:	Affinity purified
Conjugation:	Unconjugated
Storage:	For short term use, store at 2-8°C up to 1 week. For long term storage, store at -20°C in small aliquots to prevent freeze-thaw cycles.
Stability:	Shelf life: one year from despatch.
Predicted Protein Size:	131 kDa
Gene Name:	integrin subunit alpha 1
Database Link:	<a href="#">NP_852478.1</a> <a href="#">Entrez Gene 3672 Human</a> <a href="#">P56199</a>
Background:	This gene encodes the alpha 1 subunit of integrin receptors. This protein heterodimerizes with the beta 1 subunit to form a cell-surface receptor for collagen and laminin. The heterodimeric receptor is involved in cell-cell adhesion and may play a role in inflammation and fibrosis. The alpha 1 subunit contains an inserted (I) von Willebrand factor type I domain which is thought to be involved in collagen binding.
Synonyms:	CD49a; VLA-1; VLA1
Protein Families:	Druggable Genome, Transmembrane

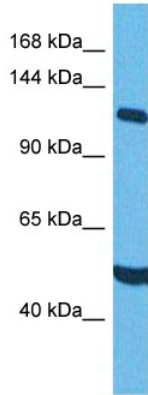


[View online »](#)

**Protein Pathways:**

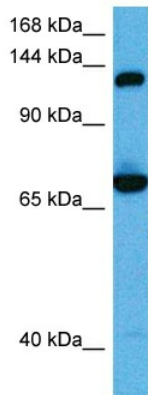
Arrhythmogenic right ventricular cardiomyopathy (ARVC), Dilated cardiomyopathy, ECM-receptor interaction, Focal adhesion, Hematopoietic cell lineage, Hypertrophic cardiomyopathy (HCM), Regulation of actin cytoskeleton

**Product images:**



Host: Rabbit  
 Target Name: ITGA1  
 Sample Type: HepG2 Cell Lysate  
 Antibody Dilution: 1.0µg/ml

Host: Rabbit  
 Target Name: ITGA1  
 Sample Tissue: Human HepG2 Whole Cell lysates  
 Antibody Dilution: 1ug/ml



Host: Rabbit  
 Target Name: Itga1  
 Sample Type: Mouse Skeletal Muscle Lysate  
 Antibody Dilution: 1.0µg/ml

Host: Mouse  
 Target Name: ITGA1  
 Sample Tissue: Mouse Skeletal Muscle  
 Antibody Dilution: 1ug/ml