

Product datasheet for **TA361011**

KIAA0090 (EMC1) Rabbit Polyclonal Antibody

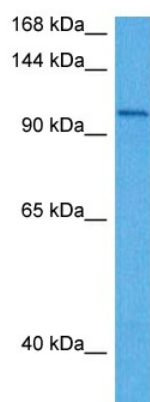
Product data:

Product Type:	Primary Antibodies
Applications:	WB
Reactivity:	Human
Host:	Rabbit
Clonality:	Polyclonal
Immunogen:	The immunogen is a synthetic peptide directed towards the C terminal region of human KIAA0090
Specificity:	Expected reactivity: Human
Formulation:	Liquid. Purified antibody supplied in 1x PBS buffer with 0.09% (w/v) sodium azide and 2% sucrose. <i>Note that this product is shipped as lyophilized powder to China customers.</i>
Concentration:	lot specific
Purification:	Affinity purified
Conjugation:	Unconjugated
Storage:	For short term use, store at 2-8°C up to 1 week. For long term storage, store at -20°C in small aliquots to prevent freeze-thaw cycles.
Stability:	Shelf life: one year from despatch.
Predicted Protein Size:	109 kDa
Gene Name:	ER membrane protein complex subunit 1
Database Link:	NP_001258356.1 Entrez Gene 23065 Human Q8N766
Background:	This gene encodes a single-pass type I transmembrane protein, which is a subunit of the endoplasmic reticulum membrane protein complex (EMC). Multiple alternatively spliced transcript variants encoding different isoforms have been found for this gene.
Synonyms:	2700016F22Rik; C230096C10Rik; Kiaa0090; mKIAA0090; RGD1310427; RP23-371E13.1



[View online »](#)

Product images:



Host: Rabbit
 Target Name: KIAA0090
 Sample Type: PANC1 Cell Lysate
 Antibody Dilution: 1.0µg/ml

Host: Rabbit
 Target Name: KIAA0090
 Sample Tissue: Human PANC1 Whole Cell lysates
 Antibody Dilution: 1ug/ml