

Product datasheet for **TA360999**

SCNN1D Rabbit Polyclonal Antibody

Product data:

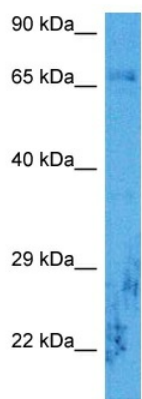
| | |
|-------------------------|---|
| Product Type: | Primary Antibodies |
| Applications: | WB |
| Reactivity: | Human |
| Host: | Rabbit |
| Clonality: | Polyclonal |
| Immunogen: | The immunogen is a synthetic peptide directed towards the C terminal region of human SCNN1D |
| Specificity: | Expected reactivity: Human |
| Formulation: | Liquid. Purified antibody supplied in 1x PBS buffer with 0.09% (w/v) sodium azide and 2% sucrose. <i>Note that this product is shipped as lyophilized powder to China customers.</i> |
| Concentration: | lot specific |
| Purification: | Affinity purified |
| Conjugation: | Unconjugated |
| Storage: | For short term use, store at 2-8°C up to 1 week. For long term storage, store at -20°C in small aliquots to prevent freeze-thaw cycles. |
| Stability: | Shelf life: one year from despatch. |
| Predicted Protein Size: | 70 kDa |
| Gene Name: | sodium channel epithelial 1 delta subunit |
| Database Link: | NP_001123885.2 Entrez Gene 6339 Human P51172 |
| Background: | Sodium permeable non-voltage-sensitive ion channel inhibited by the diuretic amiloride. Mediates the electrodiffusion of the luminal sodium (and water, which follows osmotically) through the apical membrane of epithelial cells. Controls the reabsorption of sodium in kidney, colon, lung and sweat glands. Also plays a role in taste perception. |
| Synonyms: | Delta-ENaC; Delta-NaCH; dNaCh; ENaCd; ENaCdelta; MGC149710; MGC149711; OTTHUMP00000002084; SCNED |



[View online »](#)

Protein Families: Druggable Genome, Ion Channels: Other, Transmembrane

Product images:



Host: Rabbit
Target Name: SCNN1D
Sample Type: COLO205 Cell Lysate
Antibody Dilution: 1.0 μ g/ml

Host: Rabbit
Target Name: SCNN1D
Sample Tissue: Human COLO205 Whole Cell lysates
Antibody Dilution: 1 μ g/ml