

Product datasheet for **TA360994**

Calpain 6 (CAPN6) Rabbit Polyclonal Antibody

Product data:

Product Type:	Primary Antibodies
Applications:	WB
Reactivity:	Human
Host:	Rabbit
Clonality:	Polyclonal
Immunogen:	The immunogen is a synthetic peptide directed towards the middle region of human CAPN6
Specificity:	Expected reactivity: Human
Formulation:	Liquid. Purified antibody supplied in 1x PBS buffer with 0.09% (w/v) sodium azide and 2% sucrose. <i>Note that this product is shipped as lyophilized powder to China customers.</i>
Concentration:	lot specific
Purification:	Affinity purified
Conjugation:	Unconjugated
Storage:	For short term use, store at 2-8°C up to 1 week. For long term storage, store at -20°C in small aliquots to prevent freeze-thaw cycles.
Stability:	Shelf life: one year from despatch.
Predicted Protein Size:	75 kDa
Gene Name:	calpain 6
Database Link:	NP_055104.2 Entrez Gene 827 Human Q9Y6Q1



[View online »](#)

Background:

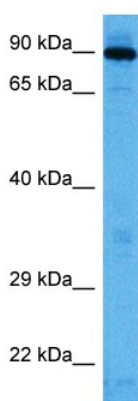
Calpains are ubiquitous, well-conserved family of calcium-dependent, cysteine proteases. The calpain proteins are heterodimers consisting of an invariant small subunit and variable large subunits. The large subunit possesses a cysteine protease domain, and both subunits possess calcium-binding domains. Calpains have been implicated in neurodegenerative processes, as their activation can be triggered by calcium influx and oxidative stress. The protein encoded by this gene is highly expressed in the placenta. Its C-terminal region lacks any homology to the calmodulin-like domain of other calpains. The protein lacks critical active site residues and thus is suggested to be proteolytically inactive. The protein may play a role in tumor formation by inhibiting apoptosis and promoting angiogenesis.

Synonyms:

calpamodulin; CalpM; CANPX; CAPNX; DJ914P14.1

Protein Families:

Druggable Genome, Protease

Product images:

Host: Rabbit
Target Name: CAPN6
Sample Type: A172 Cell Lysate
Antibody Dilution: 1.0µg/ml

Host: Rabbit
Target Name: CAPN6
Sample Tissue: Human A172 Whole Cell lysates
Antibody Dilution: 1 ug/ml