

## Product datasheet for **TA360992**

### Membralin (TMEM259) Rabbit Polyclonal Antibody

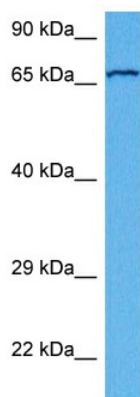
#### Product data:

Product Type:	Primary Antibodies
Applications:	WB
Reactivity:	Human
Host:	Rabbit
Clonality:	Polyclonal
Immunogen:	The immunogen is a synthetic peptide directed towards the N terminal region of human C19ORF6
Specificity:	<b>Expected reactivity:</b> Human
Formulation:	Liquid. Purified antibody supplied in 1x PBS buffer with 0.09% (w/v) sodium azide and 2% sucrose.
Concentration:	lot specific
Purification:	Affinity purified
Conjugation:	Unconjugated
Storage:	For short term use, store at 2-8°C up to 1 week. For long term storage, store at -20°C in small aliquots to prevent freeze-thaw cycles.
Stability:	Shelf life: one year from despatch.
Predicted Protein Size:	68 kDa
Gene Name:	transmembrane protein 259
Database Link:	<a href="#">NP_001028198.1</a> <a href="#">Entrez Gene 91304 Human</a> <a href="#">Q4ZIN3</a>
Synonyms:	ASBABP1; C19orf6; MBRL; MEMBRALIN; R32184_3
Protein Families:	Transmembrane



[View online »](#)

## Product images:



Host: Rabbit  
Target Name: C19orf6  
Sample Type: Jurkat Cell Lysate  
Antibody Dilution: 1.0 $\mu$ g/ml

Host: Rabbit  
Target Name: C19ORF6  
Sample Tissue: Human Jurkat Whole Cell lysates  
Antibody Dilution: 1 $\mu$ g/ml