

## Product datasheet for **TA360990**

### **DIMT1L (DIMT1) Rabbit Polyclonal Antibody**

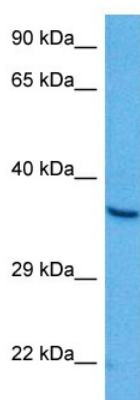
#### **Product data:**

|                         |  |
|-------------------------|--|
| Product Type:           | Primary Antibodies   |
| Applications:           | WB   |
| Reactivity:             | Human  |
| Host:                   | Rabbit   |
| Clonality:              | Polyclonal   |
| Immunogen:              | The immunogen is a synthetic peptide directed towards the middle region of human DIMT1L  |
| Specificity:            | <b>Expected reactivity:</b> Human  |
| Formulation:            | Liquid. Purified antibody supplied in 1x PBS buffer with 0.09% (w/v) sodium azide and 2% sucrose.<br><i>Note that this product is shipped as lyophilized powder to China customers.</i>  |
| Concentration:          | lot specific   |
| Purification:           | Affinity purified  |
| Conjugation:            | Unconjugated   |
| Storage:                | For short term use, store at 2-8°C up to 1 week. For long term storage, store at -20°C in small aliquots to prevent freeze-thaw cycles.  |
| Stability:              | Shelf life: one year from despatch.  |
| Predicted Protein Size: | 34 kDa   |
| Gene Name:              | DIM1 dimethyladenosine transferase 1 homolog   |
| Database Link:          | <a href="#">NP_055288.1</a><br><a href="#">Entrez Gene 27292 Human</a><br><a href="#">Q9UNQ2</a>   |
| Background:             | The protein encoded by this gene is a methyltransferase that is responsible for dimethylation of adjacent adenosines near the 18S rRNA decoding site. The encoded protein is essential for ribosome biogenesis, although its catalytic activity is not involved in the process. The yeast ortholog of this protein functions in the cytoplasm while this protein functions in the nucleus. |
| Synonyms:               | 1500031M22Rik; AV111347; Dimt1l; RGD1311752  |
| Protein Families:       | Druggable Genome   |



[View online »](#)

## Product images:



Host: Rabbit  
Target Name: DIMIT1L  
Sample Type: A549 Cell Lysate  
Antibody Dilution: 1.0 $\mu$ g/ml

Host: Rabbit  
Target Name: DIMIT1L  
Sample Tissue: Human A549 whole Cell lysates  
Antibody Dilution: 1 $\mu$ g/ml