

## Product datasheet for **TA360983**

### PAQR3 Rabbit Polyclonal Antibody

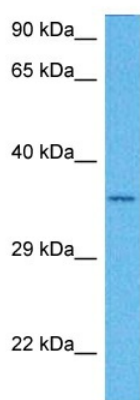
#### Product data:

Product Type:	Primary Antibodies
Applications:	WB
Reactivity:	Human
Host:	Rabbit
Clonality:	Polyclonal
Immunogen:	The immunogen is a synthetic peptide directed towards the N terminal region of human PAQR3
Specificity:	<b>Expected reactivity:</b> Human
Formulation:	Liquid. Purified antibody supplied in 1x PBS buffer with 0.09% (w/v) sodium azide and 2% sucrose.
Concentration:	lot specific
Purification:	Affinity purified
Conjugation:	Unconjugated
Storage:	For short term use, store at 2-8°C up to 1 week. For long term storage, store at -20°C in small aliquots to prevent freeze-thaw cycles.
Stability:	Shelf life: one year from despatch.
Predicted Protein Size:	36 kDa
Gene Name:	progesterone and adipoQ receptor family member 3
Database Link:	<a href="#">NP_001035292.1</a> <a href="#">Entrez Gene 152559 Human</a> <a href="#">Q6TCH7</a>
Background:	Functions as a spatial regulator of RAF1 kinase by sequestering it to the Golgi.
Synonyms:	RKTG
Protein Families:	Druggable Genome, Transmembrane



[View online »](#)

## Product images:



Host: Rabbit  
Target Name: PAQR3  
Sample Type: MCF7 Cell Lysate  
Antibody Dilution: 1.0µg/ml

Host: Rabbit  
Target Name: PAQR3  
Sample Tissue: Human MCF7 Whole Cell lysates  
Antibody Dilution: 1ug/ml