

## Product datasheet for **TA360970**

### Dectin 1 (CLEC7A) Rabbit Polyclonal Antibody

#### Product data:

Product Type:	Primary Antibodies
Applications:	WB
Reactivity:	Human
Host:	Rabbit
Clonality:	Polyclonal
Immunogen:	The immunogen is a synthetic peptide directed towards the N terminal region of human CLEC7A
Specificity:	<b>Expected reactivity:</b> Human
Formulation:	Liquid. Purified antibody supplied in 1x PBS buffer with 0.09% (w/v) sodium azide and 2% sucrose. <i>Note that this product is shipped as lyophilized powder to China customers.</i>
Concentration:	lot specific
Purification:	Affinity purified
Conjugation:	Unconjugated
Storage:	For short term use, store at 2-8°C up to 1 week. For long term storage, store at -20°C in small aliquots to prevent freeze-thaw cycles.
Stability:	Shelf life: one year from despatch.
Predicted Protein Size:	22 kDa
Gene Name:	C-type lectin domain family 7 member A
Database Link:	<a href="#">NP_072092.2</a> <a href="#">Entrez Gene 64581 Human</a> <a href="#">Q9BXN2-2</a>



[View online »](#)

**Background:**

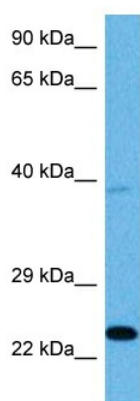
This gene encodes a member of the C-type lectin/C-type lectin-like domain (CTL/CTLD) superfamily. The encoded glycoprotein is a small type II membrane receptor with an extracellular C-type lectin-like domain fold and a cytoplasmic domain with an immunoreceptor tyrosine-based activation motif. It functions as a pattern-recognition receptor that recognizes a variety of beta-1,3-linked and beta-1,6-linked glucans from fungi and plants, and in this way plays a role in innate immune response. Alternate transcriptional splice variants, encoding different isoforms, have been characterized. This gene is closely linked to other CTL/CTLD superfamily members on chromosome 12p13 in the natural killer gene complex region.

**Synonyms:**

BGR; CANDF4; CLECSF12; dectin-1; DECTIN1; hDectin-1

**Protein Families:**

Druggable Genome, Transmembrane

**Product images:**

Host: Rabbit  
Target Name: CLEC7A  
Sample Type: MCF7 Cell Lysate  
Antibody Dilution: 1.0µg/ml

Host: Rabbit  
Target Name: CLEC7A  
Sample Tissue: Human MCF7 Whole Cell lysates  
Antibody Dilution: 1 µg/ml