

Product datasheet for **TA360966**

POTEE Rabbit Polyclonal Antibody

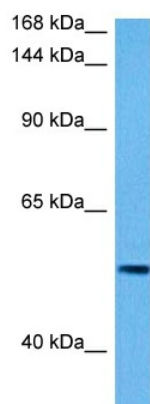
Product data:

Product Type:	Primary Antibodies
Applications:	WB
Reactivity:	Human
Host:	Rabbit
Clonality:	Polyclonal
Immunogen:	The immunogen is a synthetic peptide directed towards the middle region of human POTEE
Specificity:	Expected reactivity: Human
Formulation:	Liquid. Purified antibody supplied in 1x PBS buffer with 0.09% (w/v) sodium azide and 2% sucrose.
Concentration:	lot specific
Purification:	Affinity purified
Conjugation:	Unconjugated
Storage:	For short term use, store at 2-8°C up to 1 week. For long term storage, store at -20°C in small aliquots to prevent freeze-thaw cycles.
Stability:	Shelf life: one year from despatch.
Predicted Protein Size:	55 kDa
Gene Name:	POTE ankyrin domain family member E
Database Link:	NP_001077007.1 Entrez Gene 445582 Human A6NC16
Background:	The function of this protein remains unknown.
Synonyms:	A26C1; A26C1A; CT104.2; POTE-2; POTE2; POTE2gamma



[View online »](#)

Product images:



Host: Rabbit
Target Name: POTEE
Sample Type: THP-1 Cell Lysate
Antibody Dilution: 1.0µg/ml

Host: Rabbit
Target Name: POTEE
Sample Tissue: Human THP-1 Whole Cell lysates
Antibody Dilution: 1ug/ml