

Product datasheet for **TA360965**

TAFID Rabbit Polyclonal Antibody

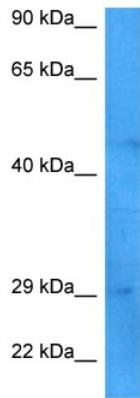
Product data:

Product Type:	Primary Antibodies
Applications:	WB
Reactivity:	Human
Host:	Rabbit
Clonality:	Polyclonal
Immunogen:	The immunogen is a synthetic peptide directed towards the middle region of human TAFID
Specificity:	Expected reactivity: Human
Formulation:	Liquid. Purified antibody supplied in 1x PBS buffer with 0.09% (w/v) sodium azide and 2% sucrose.
Concentration:	lot specific
Purification:	Affinity purified
Conjugation:	Unconjugated
Storage:	For short term use, store at 2-8°C up to 1 week. For long term storage, store at -20°C in small aliquots to prevent freeze-thaw cycles.
Stability:	Shelf life: one year from despatch.
Predicted Protein Size:	31 kDa
Gene Name:	TATA-box binding protein associated factor, RNA polymerase I subunit D
Database Link:	NP_077021.1 Entrez Gene 79101 Human Q9H5J8
Background:	TAFID is a member of the SL1 complex, which includes TBP (MIM 600075) and TAFIA (MIM 604903), TAFIB (MIM 604904), and TAFIC (MIM 604905), and plays a role in RNA polymerase I transcription (Wang et al., 2004 [PubMed 15520167]; Gorski et al., 2007 [PubMed 17318177]). [supplied by OMIM, Jun 2009]



Synonyms: JOSD3; MGC5306; RAFI41; TAF(I)41; TAFI41

Product images:



Host: Rabbit
Target Name: TAF1D
Sample Type: Jurkat Cell Lysate
Antibody Dilution: 1.0µg/ml

Host: Rabbit
Target Name: TAF1D
Sample Tissue: Human Jurkat Whole Cell lysates
Antibody Dilution: 1ug/ml