

Product datasheet for **TA360955**

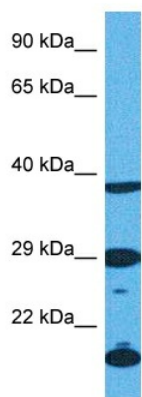
TIFA Rabbit Polyclonal Antibody

Product data:

Product Type:	Primary Antibodies
Applications:	WB
Reactivity:	Human
Host:	Rabbit
Clonality:	Polyclonal
Immunogen:	The immunogen is a synthetic peptide directed towards the middle region of human TIFA
Specificity:	Expected reactivity: Human
Formulation:	Liquid. Purified antibody supplied in 1x PBS buffer with 0.09% (w/v) sodium azide and 2% sucrose. <i>Note that this product is shipped as lyophilized powder to China customers.</i>
Concentration:	lot specific
Purification:	Affinity purified
Conjugation:	Unconjugated
Storage:	For short term use, store at 2-8°C up to 1 week. For long term storage, store at -20°C in small aliquots to prevent freeze-thaw cycles.
Stability:	Shelf life: one year from despatch.
Predicted Protein Size:	20 kDa
Gene Name:	TRAF interacting protein with forkhead associated domain
Database Link:	NP_443096.1 Entrez Gene 92610 Human Q96CG3
Background:	Adapter protein which mediates the IRAK1 and TRAF6 interaction following IL-1 stimulation, resulting in the downstream activation of NF-kappa-B and AP-1 pathways. Induces the oligomerization and polyubiquitination of TRAF6, which leads to the activation of TAK1 and IKK through a proteasome-independent mechanism.
Synonyms:	MGC20791; T2BP; T6BP; TIFAA



[View online »](#)

Product images:

Host: Rabbit
Target Name: TIFA
Sample Type: HeLa Cell Lysate
Antibody Dilution: 1.0 μ g/ml

Host: Rabbit
Target Name: TIFA
Sample Tissue: Human HeLa Whole Cell lysates
Antibody Dilution: 1 μ g/ml