

## Product datasheet for **TA360930**

### Glucuronic Acid Epimerase (GLCE) Rabbit Polyclonal Antibody

#### Product data:

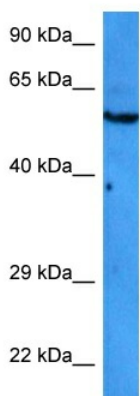
Product Type:	Primary Antibodies
Applications:	WB
Reactivity:	Human
Host:	Rabbit
Clonality:	Polyclonal
Immunogen:	The immunogen is a synthetic peptide directed towards the middle region of human GLCE
Specificity:	<b>Expected reactivity:</b> Human
Formulation:	Liquid. Purified antibody supplied in 1x PBS buffer with 0.09% (w/v) sodium azide and 2% sucrose.
Concentration:	lot specific
Purification:	Affinity purified
Conjugation:	Unconjugated
Storage:	For short term use, store at 2-8°C up to 1 week. For long term storage, store at -20°C in small aliquots to prevent freeze-thaw cycles.
Stability:	Shelf life: one year from despatch.
Predicted Protein Size:	70 kDa
Gene Name:	glucuronic acid epimerase
Database Link:	<a href="#">NP_056369.1</a> <a href="#">Entrez Gene 26035 Human</a> <a href="#">O94923</a>
Background:	Heparan sulfate (HS) is a negatively charged cell surface polysaccharide required for the biologic activities of circulating extracellular ligands. GLCE is responsible for epimerization of D-glucuronic acid (GlcA) to L-iduronic acid (IdoA) of HS, which endows the nascent polysaccharide chain with the ability to bind growth factors and cytokines (Ghiselli and Agrawal, 2005 [PubMed 15853773]).[supplied by OMIM, Jun 2008]
Synonyms:	HSEPI; KIAA0836
Protein Families:	Transmembrane



[View online »](#)

Protein Pathways: Heparan sulfate biosynthesis, Metabolic pathways

## Product images:



Host: Rabbit  
Target Name: GLCE  
Sample Type: Jurkat Cell Lysate  
Antibody Dilution: 1.0 $\mu$ g/ml

Host: Rabbit  
Target Name: GLCE  
Sample Tissue: Human Jurkat Whole Cell lysates  
Antibody Dilution: 1 $\mu$ g/ml