

Product datasheet for **TA360929**

RBMX2 Rabbit Polyclonal Antibody

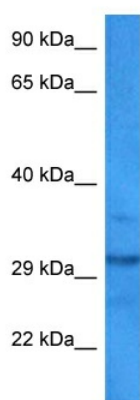
Product data:

Product Type:	Primary Antibodies
Applications:	WB
Reactivity:	Human
Host:	Rabbit
Clonality:	Polyclonal
Immunogen:	The immunogen is a synthetic peptide directed towards the middle region of human RBMX2
Specificity:	Expected reactivity: Human
Formulation:	Liquid. Purified antibody supplied in 1x PBS buffer with 0.09% (w/v) sodium azide and 2% sucrose.
Concentration:	lot specific
Purification:	Affinity purified
Conjugation:	Unconjugated
Storage:	For short term use, store at 2-8°C up to 1 week. For long term storage, store at -20°C in small aliquots to prevent freeze-thaw cycles.
Stability:	Shelf life: one year from despatch.
Predicted Protein Size:	35 kDa
Gene Name:	RNA binding motif protein, X-linked 2
Database Link:	NP_057108.2 Entrez Gene 51634 Human Q9Y388
Synonyms:	2810411A03Rik; CGI-79



[View online »](#)

Product images:



Host: Rabbit
Target Name: RBMX2
Sample Type: HCT15 Cell Lysate
Antibody Dilution: 1.0 μ g/ml

Host: Rabbit
Target Name: RBMX2
Sample Tissue: Human HCT15 Whole Cell lysates
Antibody Dilution: 1 μ g/ml