

## Product datasheet for **TA360918**

### NAT8 Rabbit Polyclonal Antibody

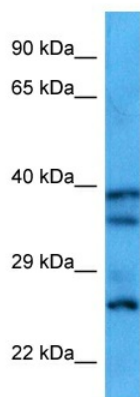
#### Product data:

Product Type:	Primary Antibodies
Applications:	WB
Reactivity:	Human
Host:	Rabbit
Clonality:	Polyclonal
Immunogen:	The immunogen is a synthetic peptide directed towards the middle region of human NAT8
Specificity:	<b>Expected reactivity:</b> Human
Formulation:	Liquid. Purified antibody supplied in 1x PBS buffer with 0.09% (w/v) sodium azide and 2% sucrose. <i>Note that this product is shipped as lyophilized powder to China customers.</i>
Concentration:	lot specific
Purification:	Affinity purified
Conjugation:	Unconjugated
Storage:	For short term use, store at 2-8°C up to 1 week. For long term storage, store at -20°C in small aliquots to prevent freeze-thaw cycles.
Stability:	Shelf life: one year from despatch.
Predicted Protein Size:	25 kDa
Gene Name:	N-acetyltransferase 8 (putative)
Database Link:	<a href="#">NP_003951.3</a> <a href="#">Entrez Gene 9027 Human</a> <a href="#">Q9UHE5</a>
Background:	This gene, isolated using the differential display method to detect tissue-specific genes, is specifically expressed in kidney and liver. The encoded protein shows amino acid sequence similarity to N-acetyltransferases. A similar protein in Xenopus affects cell adhesion and gastrulation movements, and may be localized in the secretory pathway. A highly similar paralog is found in a cluster with this gene.
Synonyms:	CML1; GLA; Hcml1; TSC501; TSC510
Protein Families:	Transmembrane



[View online »](#)

Product images:



Host: Rabbit  
Target Name: NAT8  
Sample Type: U937 Cell Lysate  
Antibody Dilution: 1.0 $\mu$ g/ml

Host: Rabbit  
Target Name: NAT8  
Sample Tissue: Human U937 Whole Cell lysates  
Antibody Dilution: 1 $\mu$ g/ml