

Product datasheet for **TA360915**

Biliverdin Reductase (BLVRA) Rabbit Polyclonal Antibody

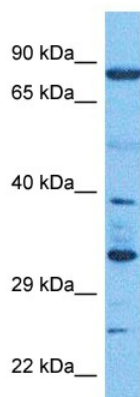
Product data:

Product Type:	Primary Antibodies
Applications:	WB
Reactivity:	Human
Host:	Rabbit
Clonality:	Polyclonal
Immunogen:	The immunogen is a synthetic peptide directed towards the middle region of human BLVRA
Specificity:	Expected reactivity: Human
Formulation:	Liquid. Purified antibody supplied in 1x PBS buffer with 0.09% (w/v) sodium azide and 2% sucrose. <i>Note that this product is shipped as lyophilized powder to China customers.</i>
Concentration:	lot specific
Purification:	Affinity purified
Conjugation:	Unconjugated
Storage:	For short term use, store at 2-8°C up to 1 week. For long term storage, store at -20°C in small aliquots to prevent freeze-thaw cycles.
Stability:	Shelf life: one year from despatch.
Predicted Protein Size:	32 kDa
Gene Name:	biliverdin reductase A
Database Link:	NP_000703.2 Entrez Gene 644 Human P53004
Background:	The protein encoded by this gene belongs to the biliverdin reductase family, members of which catalyze the conversion of biliverdin to bilirubin in the presence of NADPH or NADH. Mutations in this gene are associated with hyperbiliverdinemia. Alternatively spliced transcript variants have been found for this gene.
Synonyms:	BLVR; BVR; BVRA; OTTHUMP00000207534
Protein Pathways:	Porphyrin and chlorophyll metabolism



[View online »](#)

Product images:



Host: Rabbit
Target Name: BLVRA
Sample Type: HepG2 Cell Lysate
Antibody Dilution: 1.0 μ g/ml

Host: Rabbit
Target Name: BLVRA
Sample Tissue: Human HepG2 Whole Cell lysates
Antibody Dilution: 1 μ g/ml