

## Product datasheet for **TA360911**

### LAT Rabbit Polyclonal Antibody

#### Product data:

Product Type:	Primary Antibodies
Applications:	WB
Reactivity:	Human
Host:	Rabbit
Clonality:	Polyclonal
Immunogen:	The immunogen is a synthetic peptide directed towards the middle region of human LAT
Specificity:	<b>Expected reactivity:</b> Human
Formulation:	Liquid. Purified antibody supplied in 1x PBS buffer with 0.09% (w/v) sodium azide and 2% sucrose. <i>Note that this product is shipped as lyophilized powder to China customers.</i>
Concentration:	lot specific
Purification:	Affinity purified
Conjugation:	Unconjugated
Storage:	For short term use, store at 2-8°C up to 1 week. For long term storage, store at -20°C in small aliquots to prevent freeze-thaw cycles.
Stability:	Shelf life: one year from despatch.
Predicted Protein Size:	28 kDa
Gene Name:	linker for activation of T-cells
Database Link:	<a href="#">NP_001014987.1</a> <a href="#">Entrez Gene 27040 Human</a> <a href="#">O43561</a>
Background:	The protein encoded by this gene is phosphorylated by ZAP-70/Syk protein tyrosine kinases following activation of the T-cell antigen receptor (TCR) signal transduction pathway. This transmembrane protein localizes to lipid rafts and acts as a docking site for SH2 domain-containing proteins. Upon phosphorylation, this protein recruits multiple adaptor proteins and downstream signaling molecules into multimolecular signaling complexes located near the site of TCR engagement. Alternative splicing results in multiple transcript variants encoding different isoforms.



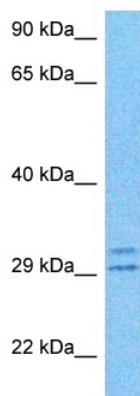
[View online »](#)

**Synonyms:** LAT1; p36-38; pp36

**Protein Families:** Druggable Genome, Transmembrane

**Protein Pathways:** Fc epsilon RI signaling pathway, Fc gamma R-mediated phagocytosis, Natural killer cell mediated cytotoxicity, T cell receptor signaling pathway

### Product images:



Host: Rabbit

Target Name: LAT

Sample Type: MCF7 Cell Lysate

Antibody Dilution: 1.0µg/ml

Host: Rabbit

Target Name: LAT

Sample Tissue: Human MCF7 Whole Cell lysates

Antibody Dilution: 1 ug/ml