

Product datasheet for **TA360908**

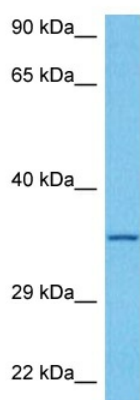
ALS2CR4 (TMEM237) Rabbit Polyclonal Antibody

Product data:

Product Type:	Primary Antibodies
Applications:	WB
Reactivity:	Human
Host:	Rabbit
Clonality:	Polyclonal
Immunogen:	The immunogen is a synthetic peptide directed towards the middle region of human ALS2CR4
Specificity:	Expected reactivity: Human
Formulation:	Liquid. Purified antibody supplied in 1x PBS buffer with 0.09% (w/v) sodium azide and 2% sucrose.
Concentration:	lot specific
Purification:	Affinity purified
Conjugation:	Unconjugated
Storage:	For short term use, store at 2-8°C up to 1 week. For long term storage, store at -20°C in small aliquots to prevent freeze-thaw cycles.
Stability:	Shelf life: one year from despatch.
Predicted Protein Size:	34 kDa
Gene Name:	transmembrane protein 237
Database Link:	NP_001037850.1 Entrez Gene 65062 Human Q96Q45-4
Background:	The protein encoded by this gene is a tetraspanin protein that is thought to be involved in WNT signaling. Defects in this gene are a cause of Joubert syndrome-14. Two transcript variants encoding different isoforms have been found for this gene.
Synonyms:	ALS2CR4; JBTS14
Protein Families:	Transmembrane



[View online »](#)

Product images:


Host: Rabbit
Target Name: ALS2CR4
Sample Type: LN18 Cell Lysate
Antibody Dilution: 1.0µg/ml

Host: Rabbit
Target Name: ALS2CR4
Sample Tissue: Human LN18 Whole Cell lysates
Antibody Dilution: 1ug/ml