

## Product datasheet for **TA360903**

### **GABA B Receptor 1 (GABBR1) Rabbit Polyclonal Antibody**

#### **Product data:**

Product Type:	Primary Antibodies
Applications:	WB
Reactivity:	Human, Rat
Host:	Rabbit
Clonality:	Polyclonal
Immunogen:	The immunogen is a synthetic peptide directed towards the C terminal region of human GABBR1
Specificity:	<b>Expected reactivity:</b> Human
Formulation:	Liquid. Purified antibody supplied in 1x PBS buffer with 0.09% (w/v) sodium azide and 2% sucrose. <i>Note that this product is shipped as lyophilized powder to China customers.</i>
Concentration:	lot specific
Purification:	Affinity purified
Conjugation:	Unconjugated
Storage:	For short term use, store at 2-8°C up to 1 week. For long term storage, store at -20°C in small aliquots to prevent freeze-thaw cycles.
Stability:	Shelf life: one year from despatch.
Predicted Protein Size:	88 kDa
Gene Name:	gamma-aminobutyric acid type B receptor subunit 1
Database Link:	<a href="#">NP_001461.1</a> <a href="#">Entrez Gene 81657 Rat</a> <a href="#">Entrez Gene 2550 Human</a> <a href="#">Q59HG8</a>
Background:	This gene encodes a receptor for gamma-aminobutyric acid (GABA), which is the main inhibitory neurotransmitter in the mammalian central nervous system. This receptor functions as a heterodimer with GABA(B) receptor 2. Defects in this gene may underlie brain disorders such as schizophrenia and epilepsy. Alternative splicing generates multiple transcript variants, but the full-length nature of some of these variants has not been determined.



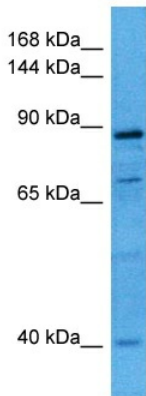
[View online »](#)

**Synonyms:** dj271M21.1.1; dj271M21.1.2; FLJ92613; GABA-B-R1; GABABR1; GABBR1-3; GB1; GPRC3A; hGB1a; OTTHUMP00000109099

**Protein Families:** Druggable Genome, GPCR, Secreted Protein, Transmembrane

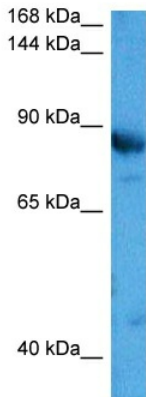
**Protein Pathways:** Neuroactive ligand-receptor interaction

**Product images:**



Host: Rabbit  
 Target Name: GABBR1  
 Sample Type: DLD1 Cell Lysate  
 Antibody Dilution: 1.0µg/ml

Host: Rabbit  
 Target Name: GABBR1  
 Sample Tissue: Human DLD1 Whole Cell lysates  
 Antibody Dilution: 1ug/ml



Host: Rabbit  
 Target Name: Gabbr1  
 Sample Type: Rat Skeletal Muscle Lysate  
 Antibody Dilution: 1.0µg/ml

Host: Rat  
 Target Name: GABBR1  
 Sample Tissue: Rat Skeletal Muscle  
 Antibody Dilution: 1ug/ml